



# April 2024 Public Outreach Summary

Sahalee Way Corridor Improvements



Sammamish, Wash.  
July 10, 2024



# April 2024 Public Outreach Summary

## Introduction

The City of Sammamish (City) recently completed the first public outreach phase for the Sahalee Way Corridor Improvements Project (project). The project will explore potential design alternatives to address non-motorized facilities and roadway improvements along 228th Avenue NE/Sahalee Way NE between NE 8th Street/NE Inglewood Hill Road and State Route (SR) 202.

The public outreach process encourages participation from local community members to learn about the project during planning and design. To that end, the City developed a project-specific website and collected community input via an online survey and a public meeting. The purpose of the public meeting was to share information about the project, collect input regarding travel habits along the Sahalee Way corridor, and answer questions. This summary provides an overview of the public engagement events held in April 2024.

## Public Engagement Events

### Online Survey

Community members were invited to participate in an online survey hosted by HDR and posted on the City's project website. The survey included questions about current corridor conditions and potential design improvements. From Apr. 3 to 26, the project team collected 332 submissions from the survey.



The screenshot shows a Jotform survey titled "Sahalee Way Corridor Improvements" from the City of Sammamish. The survey text states: "The City of Sammamish is developing potential design alternatives along 228th Avenue NE/Sahalee Way NE (also known as the Sahalee Way corridor) between NE 8th Street/NE Inglewood Hill Road and State Route (SR) 202. Your input will be used to help develop alternatives for this corridor to:"

- Increase safety for bikes, transit riders and pedestrians
- Upgrade the roadway for all users
- Improve connections to transit service, State Route 202, trails and Sammamish city center
- Promote equitable transportation options

The survey concludes with the text: "Your input will help shape the future of the Sahalee Way corridor. Submit your responses by April 26."

**Figure 1. Sahalee Way Corridor Improvements Online Survey (Jotform)**

## In-Person Public Meeting

The City held one in-person meeting on Wednesday, Apr. 24, 2024, at Sammamish City Hall from 6 to 8 p.m. (see Figure 1). Overall, 24 members of the public attended the event, and four written comments were received. The project team, comprised of City and consultant staff, was available to answer questions at the open house. See [Appendix A](#) for additional photos from the event.



Figure 2. Public Meeting – Sammamish City Hall

## Notifications

The project team publicized the online survey and public meeting using printed and digital notifications, described below. See [Appendix B](#) for more information.

**Direct Mail:** Project staff designed a postcard to notify neighboring residents about the informational session. On Apr. 3, 2024, the postcard was mailed to approximately 4,345 residents within a ½-mile radius of the study corridor.

**Web Page:** The team updated the project website ([sammamish.us/sahalee-corridor](https://sammamish.us/sahalee-corridor)) with new graphics, maps, and content. The City also shared the public meeting boards on the website after the event.

**Email:** City staff sent notifications about the event and survey to Public Works subscribers on the City's GovDelivery platform.

**Social Media:** City staff shared content about the online survey and public meeting on Facebook, Instagram, and X (formerly known as Twitter). The posts directed visitors to the project website to learn more about the project and participate in the public meeting or the survey.

## Informational Materials

The project team shared several materials at the public meeting. See [Appendix C](#) for more information.

**Public Meeting Presentation:** The project team designed a presentation slide deck that provided additional context about the project and opportunities for public input. This presentation was shared at the start of the public meeting.

**Public Meeting Boards:** The project team designed eleven presentation boards that outlined the project, schedule, and corridor input opportunities. The project team included a copy of the boards on the project website in English and Spanish. The boards included the following project topics:

- **Welcome:** Project staff provided an overview of the public meeting at this station. Attendees were encouraged to fill out a sign-in sheet. Project comment forms, demographic surveys, and business cards were also available.
- **Project Overview:** This display board explained why the City is exploring potential design alternatives for roadway and non-motorized improvements along the Sahalee Way corridor.
- **Project Schedule:** A general project schedule was shared on this board, including estimated dates for design milestones and public outreach and engagement events.
- **Existing Conditions:** This board provided several facts about the conditions on the Sahalee Way corridor, including signal locations, speed limits, crosswalks, and transit bus stops.
- **Corridor Input Opportunities (6 boards):** The project team developed several boards to collect community feedback about the corridor and future design options. The boards included questions that were asked in the online survey.
- **Engaging the Community:** This board included information about ways to stay involved during the project. Attendees were encouraged to submit written comments or ask questions with project staff.

**Demographic Survey:** Attendees were invited to complete a voluntary demographic survey at the meeting.



## Demographics

The following demographic information was collected by those who completed this portion of the online survey.

- In the survey, 173 people indicated their interest in receiving email updates for the project.
- Several respondents identified themselves as part of an organization.
  - NE 36<sup>th</sup> Street Residents
  - King County Taxpayer Association
  - Homeowners Association Crest
  - Sterling Woods Homeowners Association
- Ninety-seven percent of respondents identified that they live in Sammamish. Respondents were then asked to identify which neighborhood they resided in. The following were identified:
  - Sahalee
  - Heritage Hills
  - The Crest
  - Summer Ridge
  - Timberline
  - Plateau Estates
  - Klahanie
  - The Country
- Which race or ethnic origin do you identify with?
  - Fifty percent (169 respondents) identified as White or Caucasian, and 15 percent (50 respondents) identified as Asian. Twenty-two percent (73 respondents) declined to identify their race or ethnic origin.
- What languages are spoken in your household?
  - Eighty percent (286 respondents) selected English as a spoken language in their household. Five percent (17 respondents) selected Spanish, and four percent (13 respondents) selected Chinese.
- Do you identify as a person with a disability or other chronic condition?
  - Eighty-two percent (252 respondents) do not identify as a person with a disability or chronic condition. Twenty-two percent (22 respondents) identified “Yes”.
- Are you an owner or renter at your primary residence?
  - Eighty-eight percent (276 respondents) identified as an owner at their primary residence.
- What is your age group?
  - Thirty-six percent (110 respondents) fell in the 45 to 54 age group. Twenty-one percent (63 respondents) identified as part of the 35 to 44 age group.



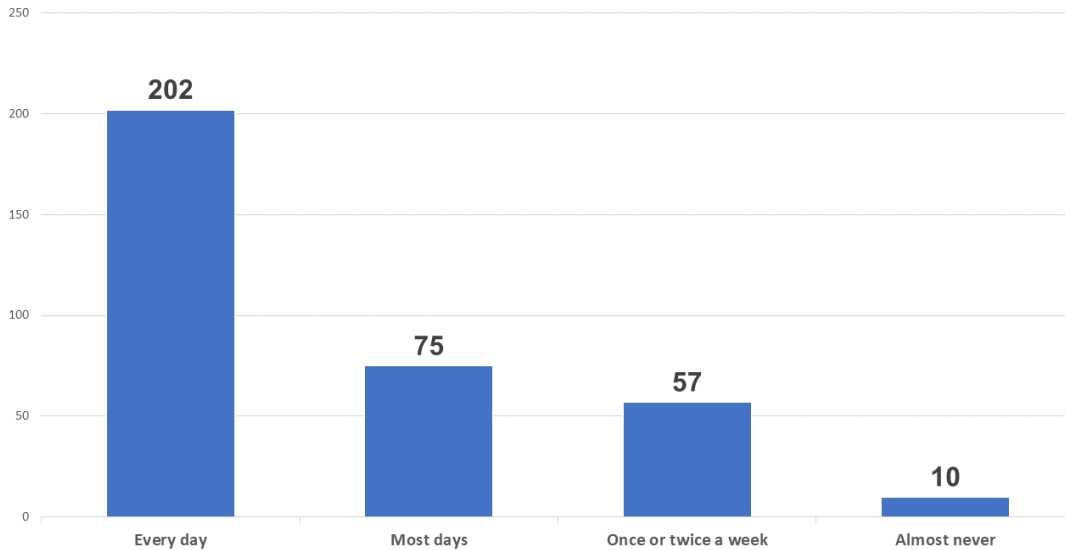
- What is your household's total annual earnings?
  - Forty-four percent (134 respondents) earn \$150,000 or more in total annual household earnings. Forty-three percent (133 respondents) declined to say how much they earn.
- What is the highest degree or level of education you have completed?
  - Forty-five percent (134 respondents) have a bachelor's degree, and 39 percent (117 respondents) have a master's degree.
- Have you ever participated in, provided input on, or attended a public meeting for a project in the City of Sammamish?
  - Forty-nine percent (151 participants) indicated "No".

Note: Four attendees completed a voluntary demographic survey at the Apr. 24 public meeting.

## Comment Themes

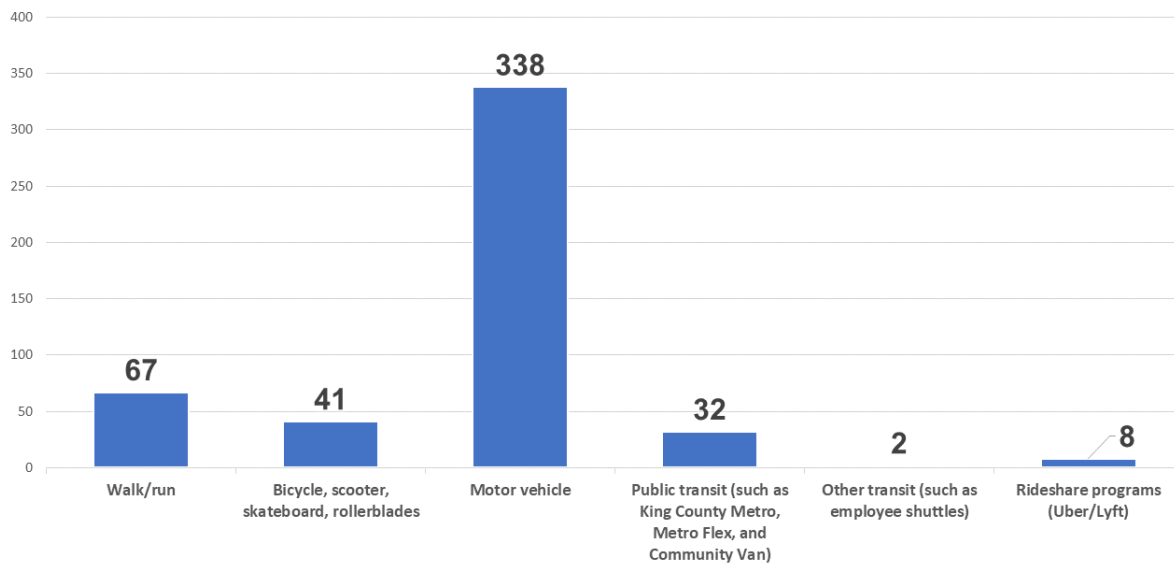
Based on the feedback collected from the online survey and public meeting, the following comment themes were identified:

### How often do you use the Sahalee Way corridor?



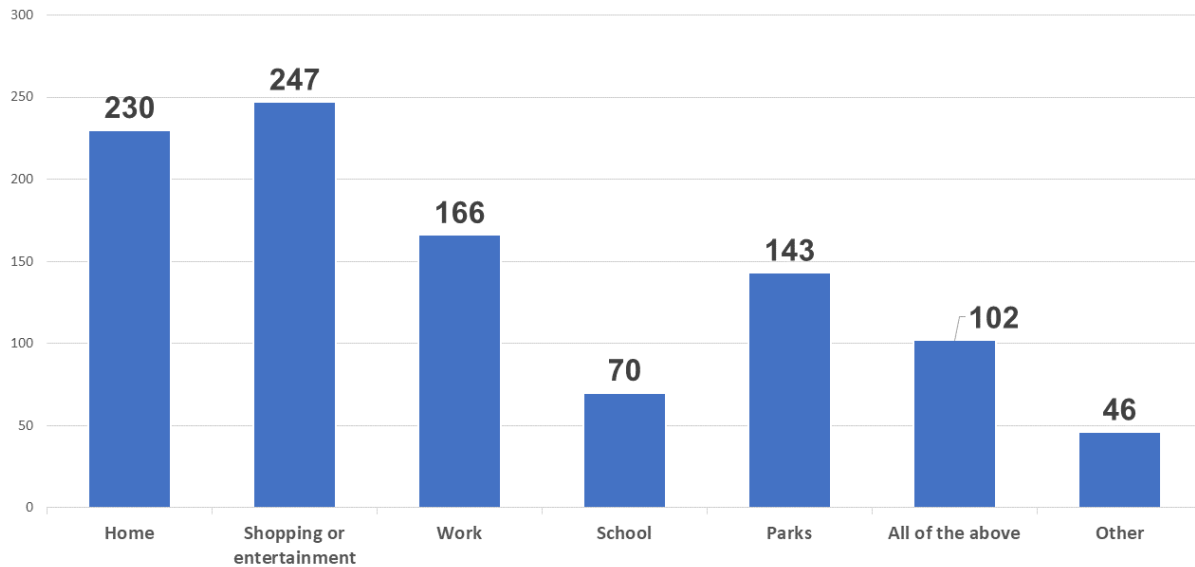
*Two hundred and two (202) respondents identified that they use the Sahalee Way corridor every day. Seventy-five (75) respondents use the Sahalee Way corridor most days.*

### What modes of transportation do you use today to travel along the Sahalee Way corridor?



*About 338 respondents use a motor vehicle to travel along the Sahalee Way corridor. Sixty-seven (67) respondents walk or run along the corridor.*

## When you travel along the Sahalee Way corridor where do you travel?



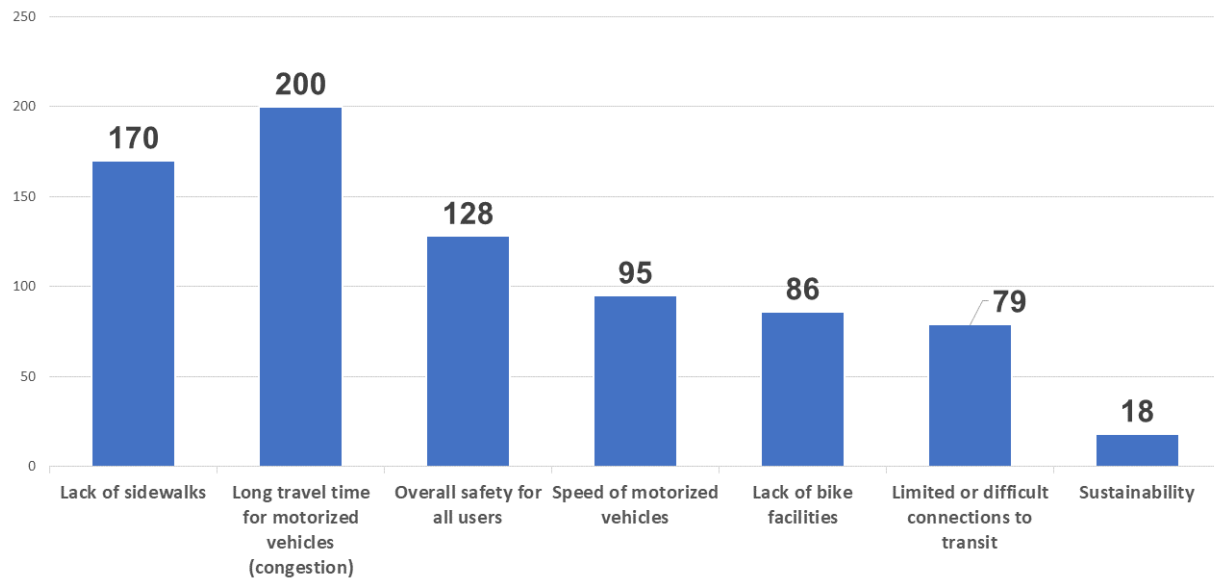
- *Two hundred and forty-seven (247) respondents travel along the corridor for shopping or entertainment purposes.*
- *Two hundred and thirty (230) respondents travel along the corridor to get home.*

### **If you access the Sahalee Way corridor from a side street, which street do you typically use?**

- *Fifty-six respondents identified NE 25<sup>th</sup> Way as a side street they use to access the corridor, and 29 respondents use NE 37<sup>th</sup> Way.*



## What are your biggest concerns with the Sahalee Way corridor as it exists today?



*Respondents identified the top concerns with the Sahalee Way corridor:*

1. Long travel time for motorized vehicles (200 responses)
2. Lack of sidewalks (170 responses)
3. Overall safety for all users (128 responses)

**If you have other concerns about the Sahalee Way corridor, please describe them below.**

*Respondents shared several concerns with the Sahalee Way corridor. The following themes were identified (in no particular order):*

- Access to reliable and frequent public transit, including King County Metro programs like Metro Flex and Community Van
- Concern about roadway conditions, travel lane widths, drainage, and seismic vulnerability
- Concern about evacuation routes and emergency vehicles along the corridor
- Difficulties with cycling up Sahalee Way from SR 202
- Inactivity of pedestrian traffic on current sidewalks
- Increased high-density residential construction within the area
- Lack of pedestrian crosswalks, traffic lights, and roundabouts along the corridor
- Lack of streetlights
- Lack of vehicular travel/turning lanes along the corridor
- Project costs
- Traffic impacts (noise, congestion, vehicle speed limits, etc.)

*This list is not exhaustive and includes a general description of topics.*

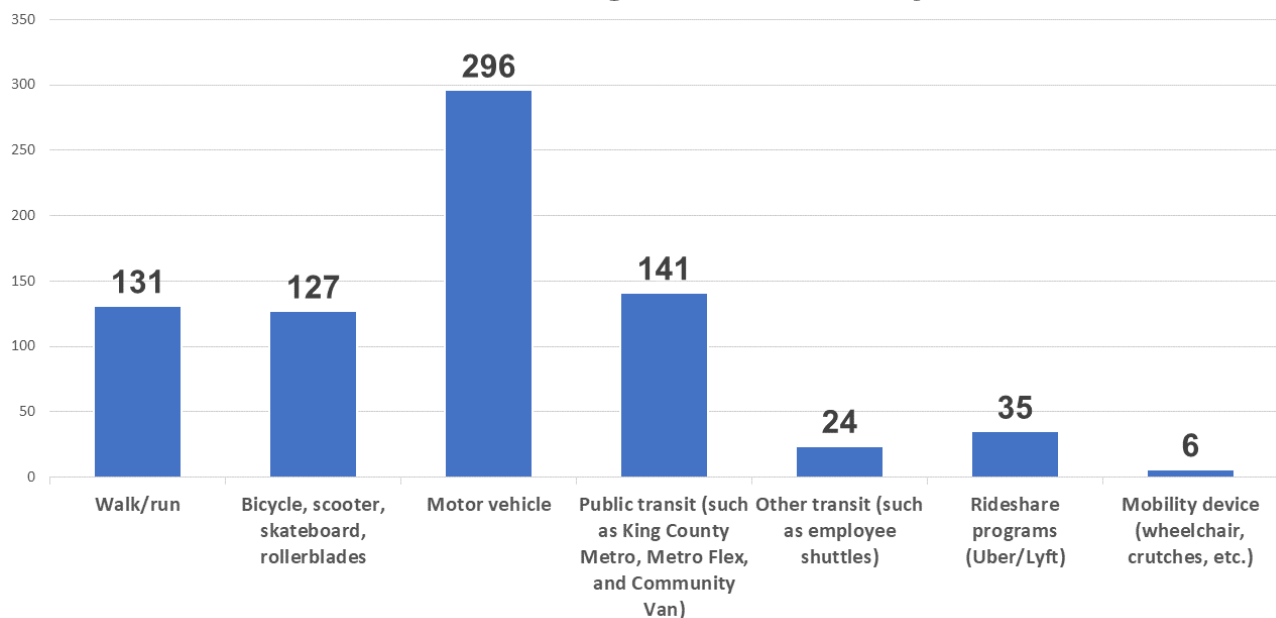
## Do you have any other questions about the Sahalee Way corridor as it exists today?

The following questions were received:

- *"What is wrong with it?"*
- *"Why don't you have bus pull overs?"*
- *What are they going to do with the utility lines above ground?*
- *How much wider will the road and sidewalk take up?*
- *How long will the project last?*
- *Why do you keep surveying about this every few years?"*
- *"Is it wide enough to accommodate the traffic expected from the Sammamish Town Center? How do we get off the plateau safely in the case of a large fire and required evacuation?"*
- *"Why is there no sidewalk on the east side of 228th between the pedestrian crossing at NE 12th and the entrance to Cimarron Park?"*
- *"I would be interested in hearing more about how the city intends to deal increased future automobile traffic."*
- *"Why has the road never been improved since we became a city? Why are the shrubs along the sidewalk areas allowed to consistently grow so tall that it becomes a sight issue leaving the developments especially at the NE 18th PL intersection? The sidewalks become very slick from the leaves in the fall and the blackberry bushes infringe in the spring/summer months."*
- *"Is it possible to widen the road to add more lanes?"*
- *"Is it possible to have a Sammamish city transit that hits all of the local stops along 228th to reduce congestion/provide an alternative to one driver/car in many cases?"*
- *"Where do you plan to get the land to build these sidewalks and pathways?"*
- *"Why is City Council 'in the pockets' of the Town Center developers?"*
- *"Why doesn't the Metro Flex transit serve Sammamish residents along the Sahalee Way corridor?"*
- *"Is the slope on the east side of Sahalee, north of NE 37th Way unstable?"*
- *"Between NE 36th St and NE 25th St is particularly dangerous for pedestrians and cyclists as drivers tend to go around the bends wide and fast. Why aren't there clear barriers and proper paths to separate pedestrians, cyclists, and motorists there?"*
- *"Why are bus stops so bare bone? Why are there no right-hand turn lanes into the neighborhoods to prevent slowdowns?"*
- *"Sahalee was the original development on the corridor. Why does it remain the only development WITHOUT safe access out of the community into northbound traffic, or safe pedestrian or cyclist access to cross Sahalee Way?"*
- *"Does the City of Sammamish have estimates and/or a ROM budget for the cost of these improvements and what is the anticipated source of funding (i.e. city, state, etc.)?"*
- *"The congestion around high school release has been terrible specially this year. Is this considered in the new plan since Lake Washington School District just decided to expand the capacity of Eastlake High School by 300 students?"*

- “I would like to see how any proposed solution ties into the evacuation time estimate study recently completed by the City of Sammamish.”
- “Where can I check what improvements are being worked on?”
- “How many people are really going to use that uphill bike lane?”
- “One of the stated goals is to improve safety. Have accidents increased?”
- “What percentage of the population is using bikes, transit or walking on Sahalee Way? How has that changed?”
- “What is the potential improvement to commuter traffic from the proposed changes?”
- “Any consideration to adding pedestrian/bike lanes not attached to Sahalee Way itself?”

### What modes of transportation would you prefer to use in the future to travel along the Sahalee Way corridor?

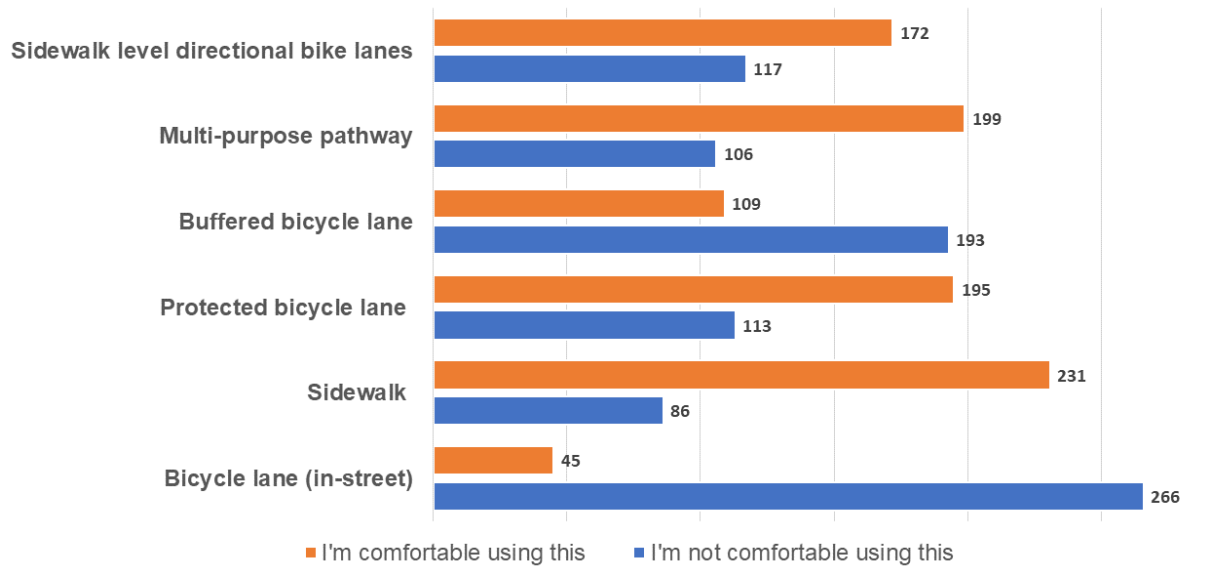


Respondents identified the top modes of transportation they prefer to use in the future to travel along the Sahalee Way corridor:

1. Motor vehicle (296 responses)
2. Public transit (141 responses)
3. Walk/run (131 responses)
4. Bicycle, scooter, skateboard, rollerblades (127 responses)

Most respondents indicated they would prefer to use a motor vehicle in the future to travel along the corridor. Compared to current transportation use on Sahalee Way, other modes of transportation saw an increase in responses, including public transit, walking/running and bicycles, scooters, skateboards, and rollerblades.

**The project can explore several options to improve pedestrian and cyclist safety. In the future, how would you feel using this facility on the Sahalee Way corridor?**



*When asked, respondents generally felt comfortable using most of the selections offered. The top facilities were identified as comfortable options:*

- Sidewalk (231 respondents)
- Multi-purpose pathway (199 respondents)
- Protected bicycle lane (195 respondents)

*However, respondents felt uncomfortable using several cycling facilities, including:*

- In-street bicycle lane (266 respondents)
- Buffered bicycle lane (193 respondents)

**Do you have any other suggestions regarding potential improvements to the Sahalee Way corridor?**

*Respondents included other suggestions for potential improvements:*

- Left/right turn lane down the middle of the corridor.
- Enhanced use of public transit.
- Incorporate a trail separated from the road by trees and vegetation.
- Widen the roadway to accommodate the population and traffic.
- Install public facilities for pedestrians, cyclists, and transit users (e.g., public restrooms, bike storage facilities, dedicated bike lanes, bus turnout areas, bus stop shelters, etc.).
- Underground existing electric and communication power lines.
- Safe pedestrian crossings at all intersections.
- Managing congestion levels at commute times.

- *Invite Lake Washington School District to the discussion to consider designing safer and lighted waiting areas for students at intersections.*
- *Covered, lighted bus stops and pick-up areas with seating.*
- *Bus pull-out areas.*
- *Sound walls and quiet pavement areas.*
- *Additional stoplights and crosswalks with flashing beacons at intersections*
- *Decreased speed limits to 35 or 40 mph.*

### **Additional Public Meeting Comments**

At the Apr. 24 public meeting, residents were invited to comment on a roll plot of the Sahalee Way corridor. The following corridor locations were identified by residents as areas of concern or opportunities for improvement:

- Sahalee Way NE / NE 50<sup>th</sup> Street
- Sahalee Way NE / NE 37<sup>th</sup> Way
- Sahalee Way NE / 217<sup>th</sup> Place SE
- Sahalee Way NE / Sahalee Drive E
- Sahalee Way NE / 223<sup>rd</sup> Avenue NE
- 228<sup>th</sup> Avenue NE / Ne 12<sup>th</sup> Place
- 228<sup>th</sup> Avenue NE / NE 25<sup>th</sup> Way

### **Next Steps**

Following the public meeting, the City will advance the alternative development process. The impacted community and general public will be briefed and notified before the preferred alternative is selected and the corridor plan is finalized. Additional public engagement opportunities may be scheduled to coincide with planned project developments and activities.



## Appendix A – Public Meeting Photos





# Appendix B – Notifications

## Postcard:

### Sahalee Way Corridor Improvements

The City of Sammamish is developing potential design alternatives to address non-motorized facilities and roadway improvements along 228th Avenue NE/ Sahalee Way NE (also known as the Sahalee Way corridor) between NE 8th Street/NE Inglewood Hill Road and State Route (SR) 202. Attend our public meeting to learn more about this project and share your thoughts.

### Your input is needed!

**SAVE! THE DATE!**

**April 24, 2024**  
**6–8 p.m.**  
**Sammamish City Hall**

Join us and provide your feedback on potential improvements in Sammamish!

#### Project Benefits

**Increased safety** for bikes, transit riders, and pedestrians

**Roadway upgrades**, potentially including paving improvements

Promotes **equitable transportation options** for those without access to a personal vehicle

Aligns with Sammamish's climate goals, which aim to **close the non-motorized infrastructure gap** between Sammamish and Redmond and **reduce single-occupancy vehicle usage**

**Improved connections** to regional trails/amenities, State Route 202, the Sammamish city center, and future light rail transit service in Redmond

**Learn more at:** [sammamish.us/sahalee-corridor](http://sammamish.us/sahalee-corridor)

City of Sammamish  
801 228th Ave SE,  
Sammamish, WA 98075  
425-295-0500 • [www.sammamish.us](http://www.sammamish.us)

### You're invited to an in-person public meeting

Learn more about the project and share your thoughts about potential improvements along the Sahalee Way corridor.

**Where:** Sammamish City Hall  
801 228th Ave SE, Sammamish, WA 98075

**When:** April 24, 2024, 6–8 p.m.

**Unable to attend?** Fill out our online survey by April 26 to provide your input.

**More Info:** [sammamish.us/sahalee-corridor](http://sammamish.us/sahalee-corridor)

Share your ideas on potential improvements to the Sahalee Way corridor  
Attend a meeting or complete the online survey.

*Comparta sus ideas sobre las posibilidades de mejorar el Corredor de Sahalee Way. Puede asistir a una junta o completar la encuesta en línea.*

请分享您对 Sahalee Way 大道潜在的改进意见。您可以通过参加会议或完成在线调查提出意见。

हमें बताएं कि आप क्या सोचते हैं कि साहली वे कॉरिडोर को बेहतर बनाया जा सकता है। आप या तो किसी बैठक में जा सकते हैं या ऑनलाइन एक सर्वेक्षण भर सकते हैं।

**Request Interpretation**  
Solicitar un intérprete  
请求口译  
व्याख्या का अनुरोध करें

**Questions?**  
Jed Ireland  
Senior Project Engineer  
[jireland@sammamish.us](mailto:jireland@sammamish.us)  
(425) 295-0563




## Project Website:

# Sahalee Way Corridor Improvements

Share this page:  
[Facebook](#) [LinkedIn](#) [Twitter](#) [Email](#)

Subscribe to Email Updates

## Sahalee Way Corridor Improvements

**Senior Project Engineer**  
 Jed Ireland  
 [JIreland@sammamish.us](mailto:JIreland@sammamish.us)  
 (425) 295 0563

### Public Involvement

The public is invited to participate and provide input on potential improvements they would like to see on the Sahalee Way Corridor. Please check back to learn more about future engagement opportunities.

We had a good turnout by the community at our public meeting held at City Hall on April 24, from 6-8 PM. Materials from that meeting are found below:

- [Sahalee Presentation 04242024](#)
- [Sahalee Meeting Boards English 04242024](#)
- [Sahalee Meeting Boards Spanish 04242024](#)

## Project Email Notification:



You are subscribed to Sahalee Way Corridor Improvements for City of Sammamish Washington. This information has recently been updated, and is now available.

*The City held a public meeting last night to gather initial feedback on the Sahalee Way Corridor Improvements project. If you couldn't attend the meeting, you can still participate by taking the online survey until Apr. 26. To learn more, please visit <https://www.sammamish.us/sahalee-corridor>.*

SHARE

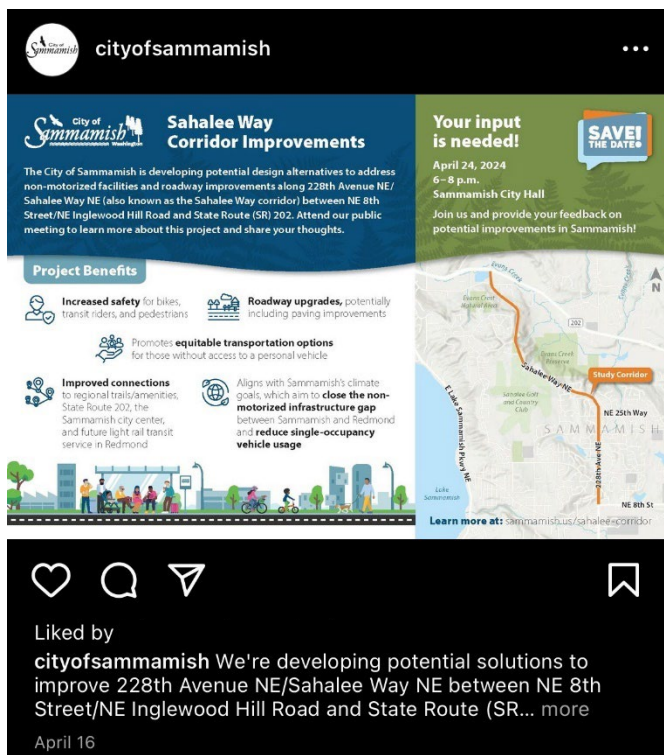
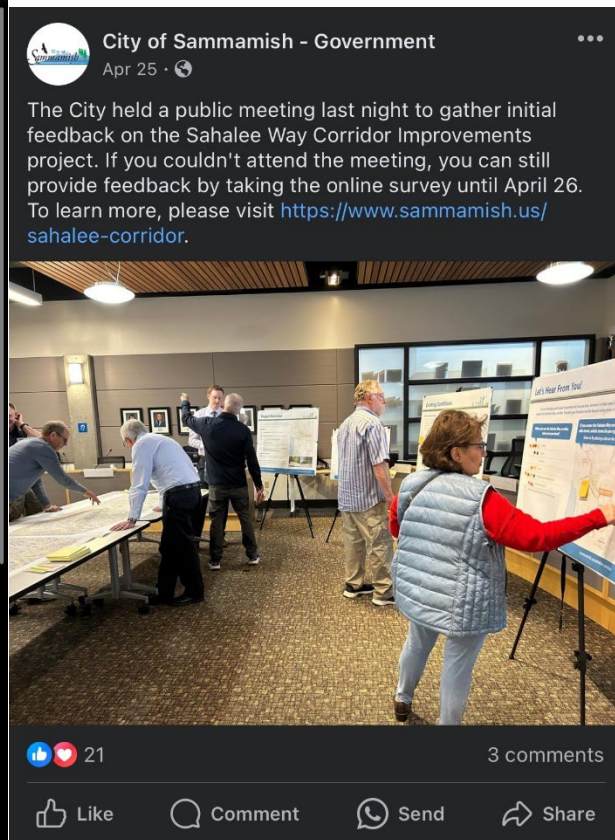
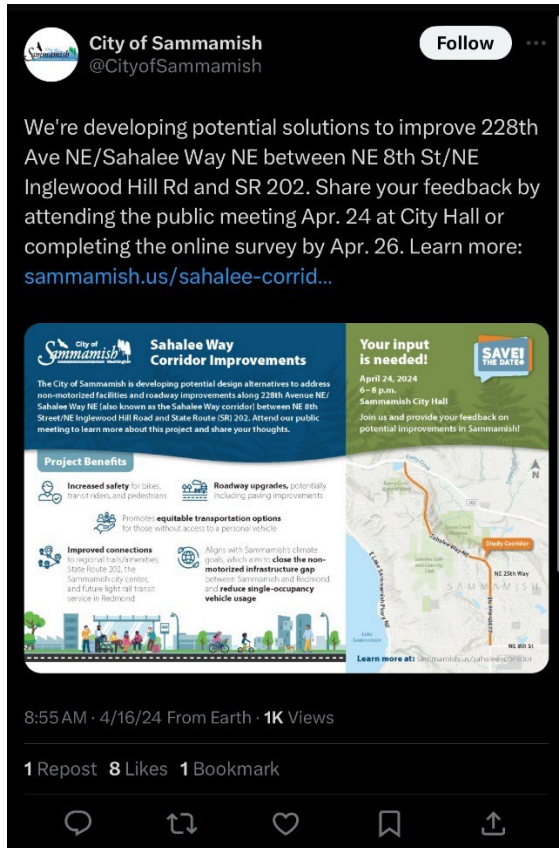
Update your subscriptions, modify your password or e-mail address, or stop subscriptions at any time on your [Subscriber Preferences Page](#). You will need to use your e-mail address to log in. If you have questions or problems with the subscription service, please contact [subscriberhelp.govdelivery.com](mailto:subscriberhelp.govdelivery.com).

This service is provided to you at no charge by the [City of Sammamish](#).

This email was sent to hernann.ambion@hdrinc.com using GovDelivery Communications Cloud on behalf of: City of Sammamish  
Washington · 801 228th Ave SE · Sammamish, WA 98075 · 425-295-0500



## Social Media:





# Appendix C – Public Meeting Materials

## Presentation:

### Sahalee Way Corridor Improvements Public Meeting

The presentation will begin at 6:10 pm

### Sahalee Way Corridor Improvements Public Meeting

Jed Ireland • Senior Project Engineer  
Brent Powell • Project Manager  
Hernann Ambion • Public Outreach  
April 24, 2024

## Event Housekeeping

- Room orientation
  - Emergency exits
  - Restrooms
  - Sign-in table
  - Where to learn more and comment
  - Refreshments
- Presentation

## Agenda

- 01 Project Overview
- 02 Purpose and Need
- 03 Project Benefits
- 04 Existing Conditions
- 05 Design Solutions
- 06 Why We Need You!
- 07 Share Your Thoughts and Questions
- 08 Stay Connected



## Project Overview

- The City of Sammamish is developing potential design alternatives to address non-motorized facilities and roadway improvements along 228th Avenue NE/Sahalee Way NE between NE 8th Street/NE Inglewood Hill Road and State Route (SR) 202.

The project aligns with Sammamish's climate goals, which aim to reduce single-occupancy vehicle usage and close the non-motorized infrastructure gap between Sammamish and Redmond.



## Project Benefits

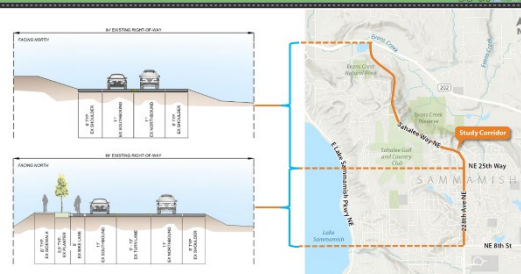
- Increase safety for bikes, transit riders, and pedestrians
- Upgrade the roadway, potentially including paving improvements
- Improve connections to regional trails/amenities, State Route 202, the Sammamish city center, and Redmond's upcoming light rail transit service
- Promote equitable transportation options for those without access to a personal vehicle



## Purpose and Need

- **Purpose**  
To establish the near- and long-term vision for the 228th Avenue NE/Sahalee Way NE corridor that is beneficial, actionable, and supported by the Sammamish City Council and public.
- **Need**  
Improve 228th Avenue NE/Sahalee Way NE to safely accommodate pedestrians, bicyclists, and transit users in Sammamish through changes to the intersections and corridor between NE 8th Street/NE Inglewood Hill Road and the north city limit.

## Existing Conditions



## Design Solutions

The project can add pedestrian and cyclist safety improvements in a number of ways.

The City wants to hear from you on which options you'd like to see along the Sahalee Way corridor.

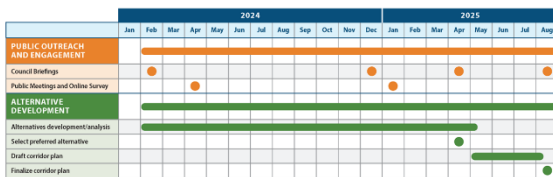


## Why We Need You!

- To help the City shape the design concept
- To engage when that preferred concept is brought to City Council for construction timing and funding consideration
- To stay connected so the public is informed about project progress

## Project Schedule

The project began in early 2024 and is expected to conclude in 2025. Public input is important and will help shape the final plan.



## Share Your Thoughts and Questions

- Visit the interactive stations to provide your input
- Fill out a comment form
- Talk to the project team
- Spread the word! Invite your neighbors to take the online survey until April 26.
  - Visit [sammamish.us/sahalee-corridor](https://sammamish.us/sahalee-corridor) to learn more.

Your feedback will help the City determine the preferred concept, which will be shared with the public in early 2025.

## Stay Connected



Scan to learn more

### Project Contact

Jed Ireland  
Senior Project Engineer  
[jireland@sammamish.us](mailto:jireland@sammamish.us)  
(425) 295-0563



Sign up to receive email updates



Request a briefing for your organization



Visit the website: [sammamish.us/sahalee-corridor](https://sammamish.us/sahalee-corridor)

# Project Overview

The City of Sammamish is developing a potential design and plans for conversion of an existing two-lane road into a four-lane boulevard. The project is located on the intersection of SR 202 and SR 202N, just north of the intersection of SR 202 and SR 202N. The project is located on the intersection of SR 202 and SR 202N, just north of the intersection of SR 202 and SR 202N.

## Benefits

- Increased safety** for motorists, bicyclists, and pedestrians
- Roadway upgrades**, potentially including improving infrastructure
- More equitable transportation options** for all users, including bicyclists and pedestrians
- Improved connections** to local and regional transit services, including the Sammamish Light Rail and the Sammamish Light Rail
- Align with the city's vision for a more sustainable, walkable, and bikeable community**
- Motorized infrastructure** gap between Sammamish and Seattle and reduce single-occupancy vehicle usage

## Purpose and Need

**Purpose:** To establish a four-lane boulevard on the SR 202N, just north of the intersection of SR 202 and SR 202N, to provide a more equitable transportation option for all users, including bicyclists and pedestrians.

**Need:** The city's vision for a more sustainable, walkable, and bikeable community is to provide a more equitable transportation option for all users, including bicyclists and pedestrians.

**Location:** The project is located on the intersection of SR 202 and SR 202N, just north of the intersection of SR 202 and SR 202N.

**Map:** The map shows the project location on the intersection of SR 202 and SR 202N, just north of the intersection of SR 202 and SR 202N.

**Images:** The images show the current state of the intersection and the proposed design for the boulevard.

**Samahale Way Corridor Improvements**

[samamish.wa.gov/samahale-corridor](http://samamish.wa.gov/samahale-corridor)

[illegible]

As we develop and finalize the preferred concept plan, we want to hear your thoughts about the Sahalee Way corridor. Provide your feedback on the board using dots or sticky notes.

**When you use the Sahalee Way corridor, where do you travel?**

Home
Work
School
Religion
Shopping or errands/transport
Other (describe your thoughts using a sticky note)

**If you access the Sahalee Way corridor from a side street, which street do you typically use?**  
Show us by placing a dot on the map!



## Let's Hear From You!

As we develop and finalize the preferred concept plan, we want to hear your thoughts about the Sahalee Way corridor. Provide your feedback on the board using dots or sticky notes.

### What are your biggest concerns with the Sahalee Way corridor as it exists today?

Long travel times for motorized vehicles through the corridor
Excess of motorized vehicles
Lack of sidewalks
Lack of bike facilities
Urban safety
Limited on-street parking for transit
Overall safety for all users

Other (Add your thoughts using a sticky note)

### Do you have any questions about the Sahalee Way corridor as it exists today?

Make your thoughts using a sticky note

Sahalee Way Corridor Improvements

sammamish.us/sahalee-corridor

## Let's Hear From You!

This project can explore several options to improve pedestrian and cyclist safety. See the visual examples of non-motorized facilities below.



Sahalee Way Corridor Improvements

sammamish.us/sahalee-corridor

## Let's Hear From You!

This project can explore several options to improve pedestrian and cyclist safety. In the future, how would you feel using this facility on the Sahalee Way corridor?



Bicycle Lane (separated)



Sidewalk (separated) or pedestrian/bicycle facility



Protected bicycle lane (separated) between traffic and bus lane



Buffered bicycle lane (separated) between traffic and bus lane



Multilane bicycle facility



Sidewalk (separated) or bus lane



I'm most comfortable using this



I'm comfortable using this

Sahalee Way Corridor Improvements

sammamish.us/sahalee-corridor

## Let's Hear From You!

As we develop and finalize the preferred concept plan, we want to hear your thoughts about the Sahalee Way corridor. Provide your feedback on the board using dots or sticky notes.

### Which modes would you prefer to use in the future for traveling along the Sahalee Way corridor? (select all that apply)

Walking
Walking/bicycling (e.g., stroller, etc.)
Stroller, wheelchair, bicycle, etc.
Motor vehicle
Public transit (e.g., bus, light rail, etc.)
Other transit (e.g., bicycle, etc.)
Other transit (e.g., bicycle, etc.)

Other (Add your thoughts using a sticky note)

### Do you have any other suggestions regarding potential improvements to the Sahalee Way corridor?

Make your thoughts using a sticky note

Sahalee Way Corridor Improvements

sammamish.us/sahalee-corridor

## Engaging the Community

### How to Submit Comments



Tell us tonight by visiting our stations and filling out a comment form

Encourage your neighbors and friends to fill out our online survey by April 28



Contact Jed Ireland, Senior Project Engineer, at [jireland@sammamish.us](mailto:jireland@sammamish.us) or (425) 233-0263



### Stay Involved

- 1) Sign up for email updates
- 2) Visit our website: [sammamish.us/sahalee-corridor](http://sammamish.us/sahalee-corridor)
- 3) Request a meeting for your organization
- 4) Attend public meetings and provide comments



SCAN THE QR CODE TO VISIT OUR WEBSITE

Sahalee Way Corridor Improvements