

# Sammamish, Washington

## TREE CANOPY ASSESSMENT



Trees in Sammamish do more than just make the city beautiful; they deliver real, measurable benefits for the community, the local economy, and the environment. Together, these trees make up Sammamish's urban forest, an essential part of the city's infrastructure that helps manage stormwater, clean the air and water, store carbon, and make our neighborhoods healthier and more enjoyable places to live.

Sammamish has one of the densest tree canopies in King County, and it's continuing to grow. Across the city, the lower Sammamish commons park saw the largest canopy percentage gain, with a 10% increase in tree cover since 2017. Neighborhood Business, Office Use, and Mixed Residential zones each saw canopy coverage grow by an impressive 3%. Residential areas led the way overall, adding about 102 acres of new canopy during the six-year study period.

There's even more potential ahead—in Sammamish, residential areas offer the greatest opportunity for tree canopy expansion. Over 2,000 acres within residential zones comprise 96% of plantable space throughout the city. With so much opportunity to add trees, expanding Sammamish's canopy is well within reach. These results show how important it is for the community to come together to care for existing trees and plant new ones where they're needed most.

**TREE CANOPY (2023)**

**54%**  
of the land area was covered with canopy in 2023

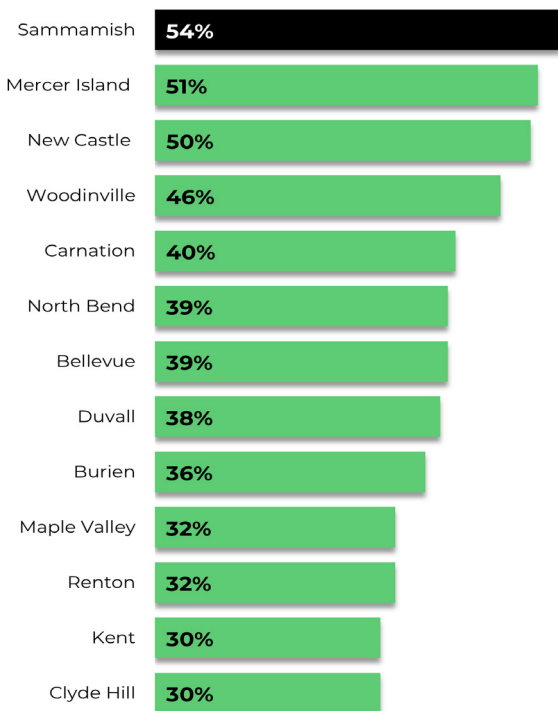
**PLANTABLE SPACE (2023)**

**20%**  
of the land area was suitable for planting

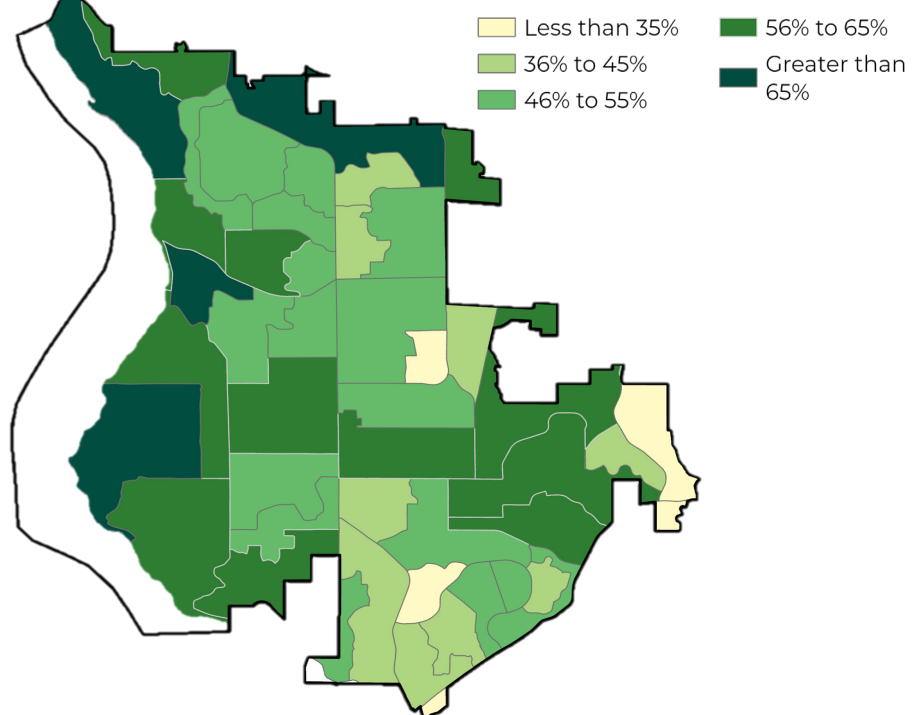
**TREE CANOPY CHANGE**

**153 acres**  
of canopy gained from 2017 to 2023

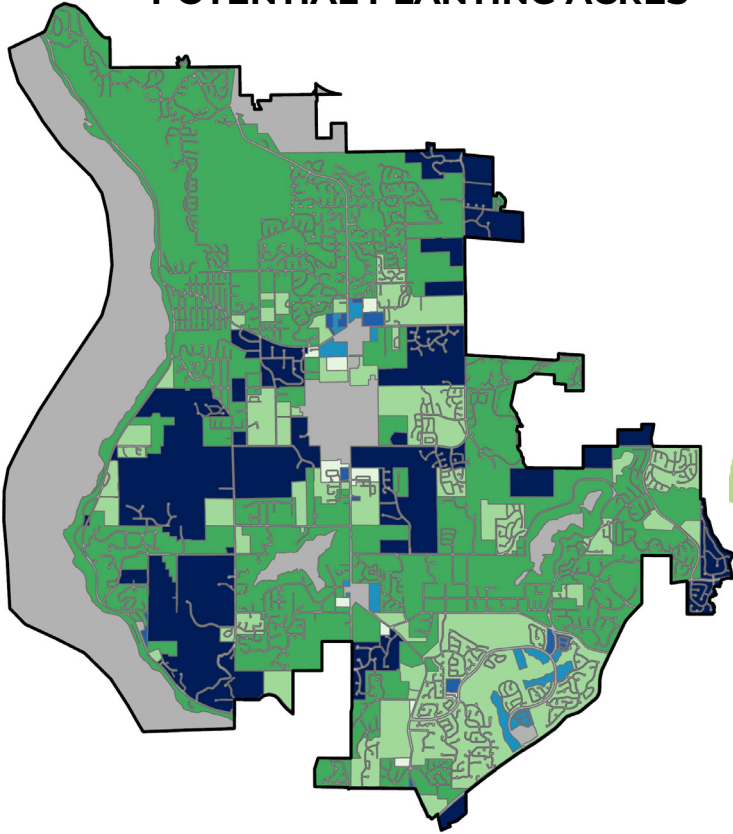
### 2023 REGIONAL CANOPY COVER



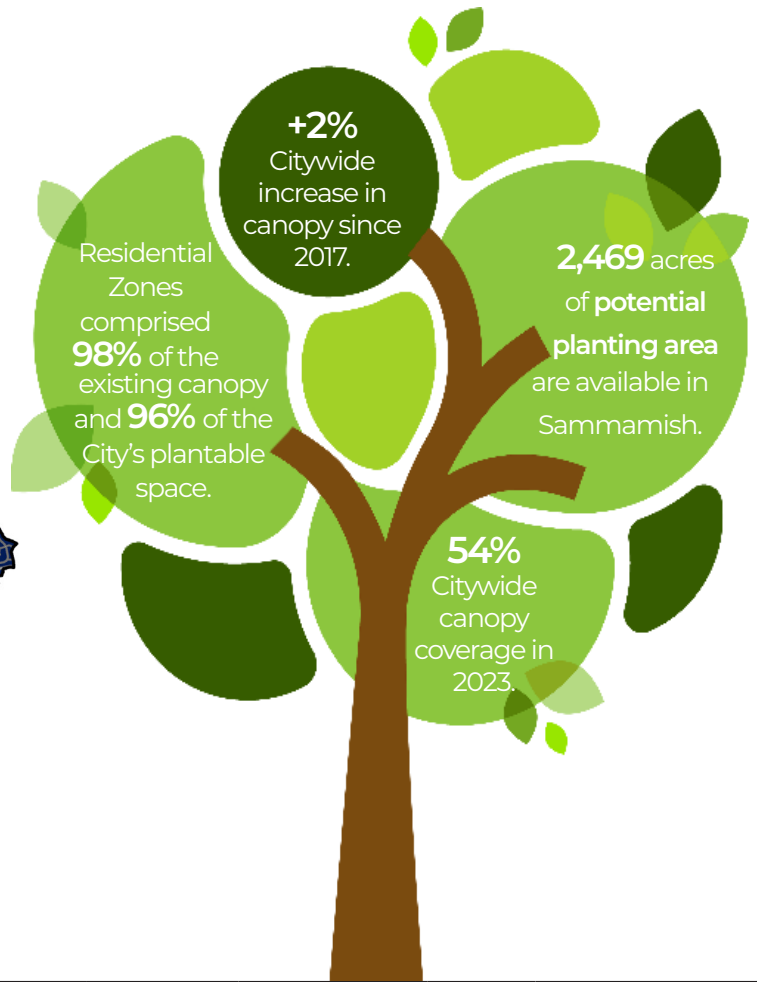
### TREE CANOPY % BY CENSUS BLOCK GROUPS



# RESIDENTIAL AREAS POTENTIAL PLANTING ACRES



- R-1 (521 acres)
- R-12 (9 acres)
- R-18 (16 acres)
- R-4 (1,331 acres)
- R-6 (495 acres)
- R-8 (17 acres)



Zoning Class	2017	2023				Canopy Change (2017 - 2023)	
	Canopy Percent	Plantable Space Acres	Canopy Acres	Canopy Percent	Citywide Canopy Distribution	Acres	Percentage Point
Community Business	15%	3	9	15%	0.1%	0.4	1%
Neighborhood Business	27%	0	1	29%	0.0%	0.1	3%
Office	30%	2	4	33%	0.1%	0.4	3%
Residential	56%	2,389	6,456	57%	98.0%	101.7	1%
Mixed-Use	39%	28	26	41%	0.4%	1.3	2%
Mixed Residential	58%	22	47	61%	0.7%	2.4	3%
Lower Intensity Residential	66%	10	25	69%	0.4%	0.8	2%
Civic Campus	27%	14	14	36%	0.2%	3.7	10%
Reserve	47%	2	5	48%	0.1%	0.1	1%
<b>Total or Average</b>	<b>41%*</b>	<b>2,469</b>	<b>6,588</b>	<b>43%*</b>	<b>100%</b>	<b>111</b>	<b>3%*</b>

\*Note: Zoning canopy percentages are class averages and will differ from citywide totals due to differences in baseline land area.

## TREE CANOPY CHANGE (2017-2023)

**+2.2%**  
**+153 ACRES**

## TREE CANOPY IN 2017

**52.8%**  
**7,026 ACRES**

## TREE CANOPY IN 2023

**54.0%**  
**7,180 ACRES**