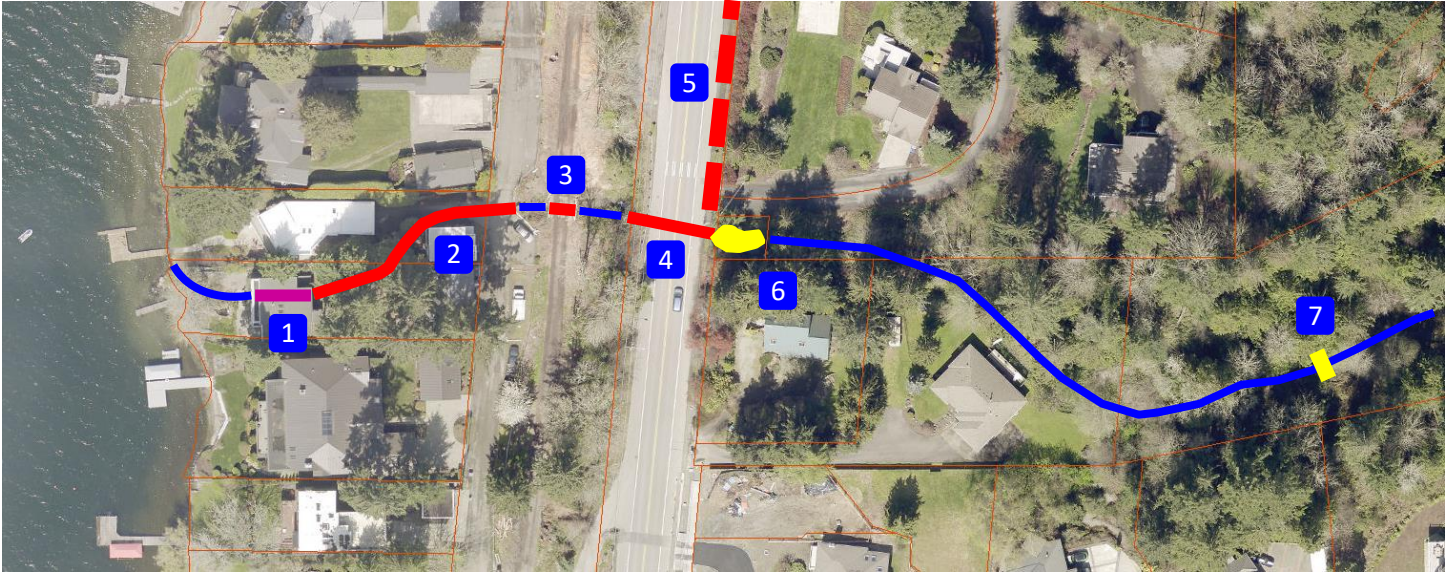


Existing Fish Passage Barriers



Description of Fish Passage Barriers

1. 60 feet from lake; start of concrete channel through basement level of residential property (Washington State Department of Fish and Wildlife (WDFW) Barrier 920017). Partial barrier.
2. 105 feet from lake; start of corrugated metal pipe through multiple residential properties and beneath East Lake Sammamish Shore Lane NE (WDFW Barrier 920017). Full barrier. King County replacing segment beneath Shore Lane as part of trail project.
3. 280 feet from lake; start of corrugated metal pipe beneath East Lake Sammamish Regional Trail (WDFW Barrier 920268). Full barrier. King County replacing as part of trail project.
4. 340 feet from lake; start of corrugated metal pipe beneath East Lake Sammamish Parkway NE (WDFW Barrier 920111). Full barrier.
5. 420 feet from lake; start of corrugated metal high flow bypass pipe (not considered part of stream so not mapped by WDFW). Full barrier.
6. 420 feet from lake; center of sediment collection basin (WDFW Barrier 920111). Full barrier.
7. 900 feet from lake; concrete diversion dam (WDFW Barrier 920112). Full barrier.

