

CITY OF SAMMAMISH 2023 OVERLAY PROJECT



MAYOR
KALI CLARK

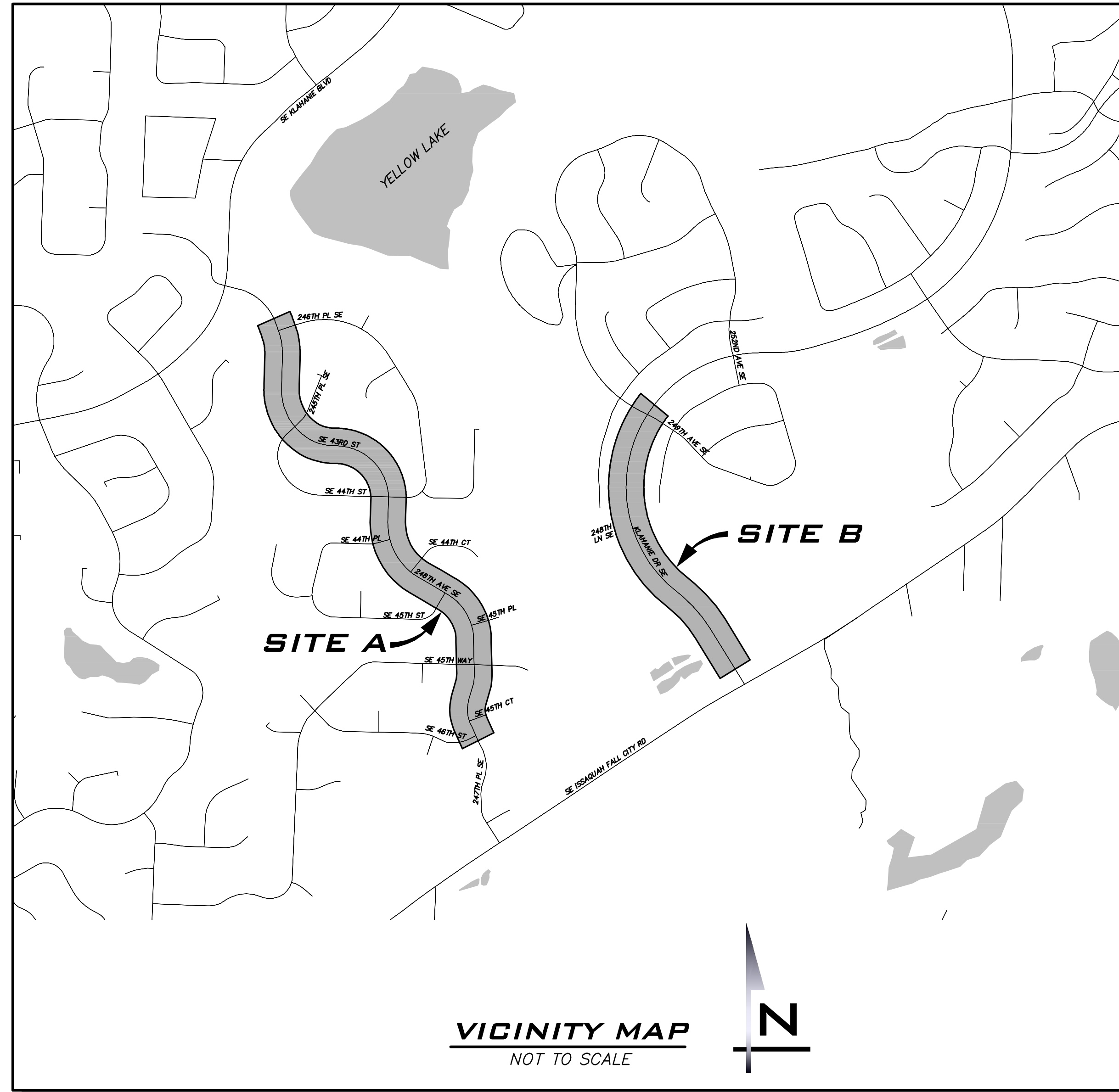
DEPUTY MAYOR
AMY LAM

CITY COUNCIL
ROISIN O'FARRELL
RITUJA INDAPURE
KENT TREEN
PAMELA STUART
KAREN HOWE

CITY MANAGER
SCOTT MAGGOLL

PUBLIC WORKS DIRECTOR
JEFF ELEKES

CITY ENGINEER
DOUG VAN GELDER



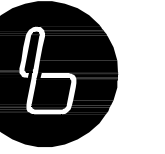
SHEET INDEX

1	CV-01	COVER SHEET
2	GN-01	GENERAL NOTES, QUANTITIES & LEGEND
3	OP-01	OVERLAY PLAN - SITE A - 247TH PL SE
4	OP-02	OVERLAY PLAN - SITE A - 246TH PL SE
5	OP-03	OVERLAY PLAN - SITE A - SE 43RD PL
6	OP-04	OVERLAY PLAN - SITE A - 244TH PL SE
7	OP-05	OVERLAY PLAN - SITE A - SE 44TH CT
8	OP-06	OVERLAY PLAN - SITE B - KLAHANIE DR SE
9	OP-07	OVERLAY PLAN - SITE B - KLAHANIE DR SE
10	OP-08	OVERLAY PLAN - SITE B - KLAHANIE DR SE
11	DT-01	DETAILS
12	DT-02	DETAILS
13	DT-03	DETAILS

PROJECT TEAM

CIVIL ENGINEER
BLUELINE
25 CENTRAL WAY, SUITE 400
KIRKLAND, WA 98033
(425) 250-7243
CONTACT: ROB DAHN, PE

OWNER
CITY OF SAMMAMISH
801 228TH AVE SE
SAMMAMISH, WA 98075
(425) 295-0566
CONTACT: JIM GRUEBER, PE



BLUELINE

25 CENTRAL WAY, SUITE 400,
KIRKLAND, WA 98033
P: 425.216.4051 F: 425.216.4052
WWW.THEBLUELINEGROUP.COM

SCALE:
AS NOTED

PROJECT MANAGER:
ROB DAHN, PE

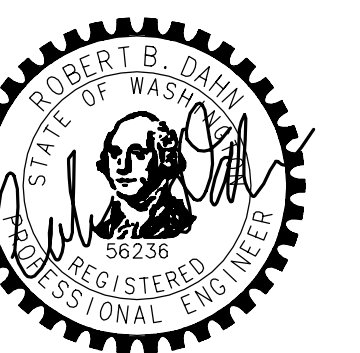
PROJECT ENGINEER:
GRACE GARWIN, EIT

DESIGNER:
CAROL DOGGETT

ISSUE DATE:
5/24/2023

NO	DATE	BY	REVISIONS

COVER SHEET
 2023 OVERLAY PROJECT
 CITY OF SAMMAMISH
 WASHINGTON



5/26/23

JOB NUMBER:

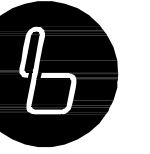
22-224

SHEET NAME:

CV-01

SHT **1** OF **13**

NOTICE!!!
KEEP STREETS CLEAN
AS THE PRINCIPAL CONTRACTOR FOR THIS PROJECT, YOU ARE RESPONSIBLE FOR KEEPING THE RIGHT-OF-WAY IN A CLEAN AND HAZARD FREE CONDITION.



BLUELINE

25 CENTRAL WAY, SUITE 400,
KIRKLAND, WA 98033
P: 425.216.4051 F: 425.216.4052
WWW.THEBLUELINEGROUP.COM

SCALE:
AS NOTED

PROJECT MANAGER:
ROB DAHN, PE

PROJECT ENGINEER:
GRACE GARWIN, EIT

DESIGNER:
CAROL DOGGETT

ISSUE DATE:
5/24/2023

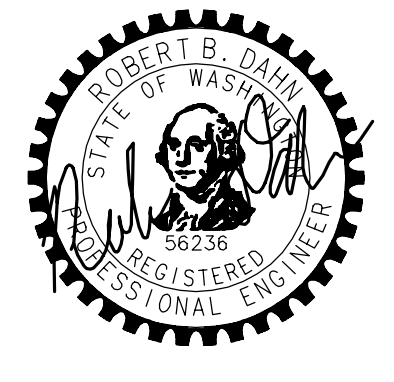
REVISIONS

BY

DATE

NO

GENERAL NOTES, QUANTITIES & LEGEND
2023 OVERLAY PROJECT
CITY OF SAMMAMISH WASHINGTON



5/26/23

JOB NUMBER:
22-224

SHEET NAME:
GN-01

SHT **2** OF **13**

QUANTITIES TABLE						
NO	SECTION	DESCRIPTION OF ITEM	UNITS	TOTAL	SITE A QUANTITY	SITE B QUANTITY
1	SS 1-04	MINOR CHANGE	CALC	1	-	-
2	SS 1-07	SPCC PLAN	LS	1	-	-
3	SS 1-09	MOBILIZATION	LS	1	-	-
4	SP 1-10	FLAGGERS	HR	560	240	320
5	SP 1-10	TRAFFIC CONTROL SUPERVISOR	LS	1	-	-
6	SP 1-10	PORTABLE CHANGEABLE MESSAGE SIGN	LS	1	-	-
7	SP 1-10	OTHER TEMPORARY TRAFFIC CONTROL	LS	1	-	-
8	SP 2-01	SITE B PREPARATION	LS	1	-	-
9	SP 2-01	SITE A PREPARATION	LS	1	-	-
10	SP 5-04	ANTI-STRIPPING ADDITIVE	EST	1	-	-
11	SP 5-04	PLANING BITUMINOUS PAVEMENT	SY	23,500	10,200	13,300
12	SP 5-04	HMA CL. 1/2 IN. PG 58H-22 FIBER REINFORCEMENT	TON	3,730	2,215	1,515
13	SP 5-04	ASPHALT COST PRICE ADJUSTMENT	CALC	1	-	-
14	SP 7-05	ADJUST MANHOLE - COS	EA	5	3	2
15	SP 7-05	ADJUST MANHOLE - SPWSD	EA	22	19	3
16	SP 7-05	ADJUST MANHOLE - PSE	EA	1	-	1
17	SP 7-12	ADJUST VALVE BOX - SPWSD	EA	45	29	16
18	SS 8-01	INLET PROTECTION	EA	67	40	27
19	SP 8-09	RAISED PAVEMENT MARKER TYPE 2	HUND	1.60	-	1.60
20	SP 8-13	ADJUST MONUMENT CASE WITH COVER	EA	31	28	3
21	SP 8-13	ADJUST MONUMENT CASE WITH COVER - RISER	EA	31	28	3
22	SP 8-22	PAINT LINE	LF	7,500	-	7,500
23	SP 8-22	PLASTIC WIDE LINE	LF	60	-	60
24	SP 8-22	PLASTIC STOP LINE	LF	210	130	80
25	SP 8-22	PLASTIC TRAFFIC ARROW	EA	9	-	9
26	SP 8-22	PLASTIC CROSSWALK LINE	SF	660	-	660

GENERAL SITE PLAN NOTES

PLAN NOTE:
INFORMATION ON THESE PLANS WAS NOT SURVEYED AND IS INTENDED TO BE USED AS A REFERENCE ONLY. CONTRACTOR IS EXPECTED TO VERIFY INFORMATION WITH ENGINEER.

UNDERGROUND UTILITIES:
THE CONTRACTOR IS RESPONSIBLE FOR TIMELY NOTIFICATION OF ALL UTILITIES IN ADVANCE OF ANY UNDERGROUND CONSTRUCTION. NOTIFY UTILITIES ONE-CALL UNDERGROUND LOCATION CENTER BY PHONING 1-800-424-5555 A MINIMUM OF TWO BUSINESS DAYS BEFORE BEGINNING CONSTRUCTION.

EROSION CONTROL:
ALL POLLUTANTS OTHER THAN SEDIMENTS THAT OCCUR ON-SITE DURING CONSTRUCTION SHALL BE HANDLED AND DISPOSED OF IN A MANNER THAT DOES NOT CAUSE CONTAMINATION OF STORM WATER.

INSTALL EROSION CONTROL MEASURES PRIOR TO BEGINNING ANY CONSTRUCTION THAT COULD RESULT IN SEDIMENT OR CONSTRUCTION MATERIALS ENTER THE DRAINAGE SYSTEM.

PROMPTLY STABILIZE ANY DISTURBED AREAS SUSCEPTIBLE TO EROSION.

STREET CLASSIFICATION FOR MESSAGE BOARD SIGNS:
PER CITY OF SAMMAMISH STREET CLASSIFICATION MAP SITE A IS A RESIDENTIAL ROAD AND SITE B IS A MAJOR COLLECTOR ROAD. STREETS NOT CLASSIFIED AS RESIDENTIAL ARE REQUIRED TO HAVE MESSAGE BOARDS ON EITHER END OF THE PROJECT LIMITS INFORMING DRIVERS ABOUT THE WORK. THE MESSAGE BOARDS MUST BE TURNED ON ONE (1) WEEK BEFORE WORK CAN BEGIN ON A SPECIFIC SITE.

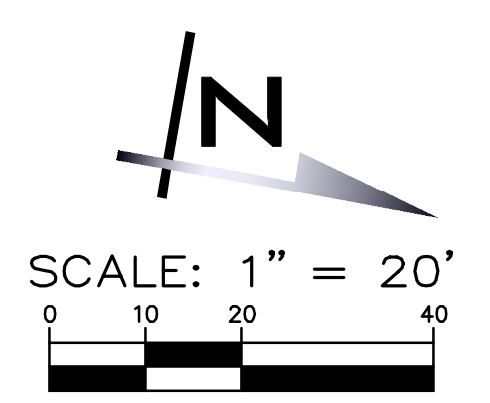
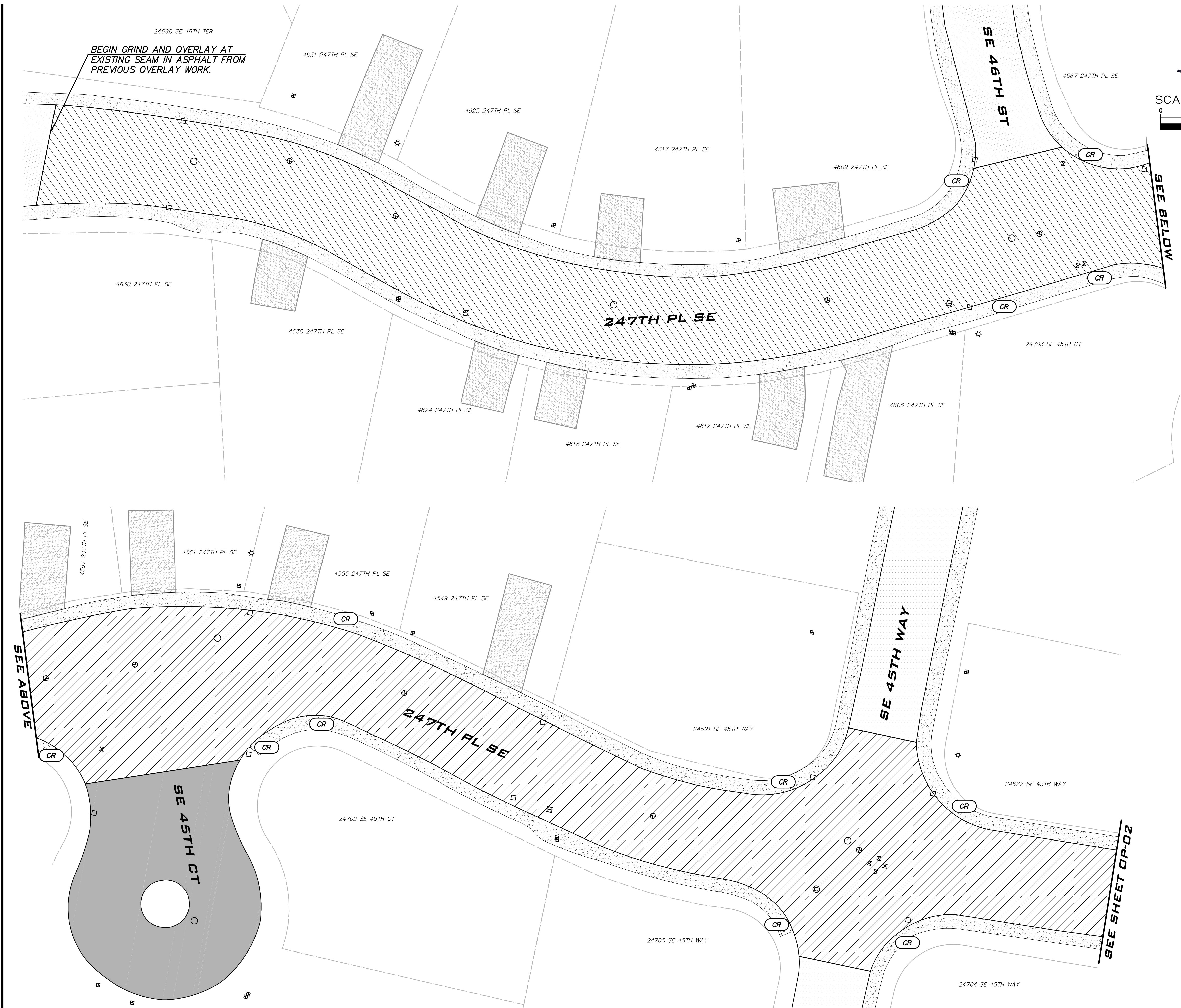
TRAFFIC CONTROL PLANS:
TRAFFIC CONTROL PLANS WILL NEED TO BE SUBMITTED AND APPROVED BY THE CITY'S TRAFFIC ENGINEER BEFORE WORK ON A SITE CAN START.

SITE MEETINGS:
THE CONTRACTOR SHALL SET UP AN ON-SITE MEETING WITH THE CITY BEFORE STARTING WORK ON A NEW SITE.

LEGEND

- EDGE GRIND AND 1.5" OVERLAY (SEE DETAIL ON SHEET DT-01)
- EDGE GRIND AND 2" OVERLAY (SEE DETAIL ON SHEET DT-01)
- 2" DEPTH GRIND AND OVERLAY (SEE DETAIL ON SHEET DT-01)
- TEMPORARY ACCESS AND MAINTENANCE TO ADA RAMPS REQUIRED
- ☆ POLE LIGHT
- CATCH BASIN, TYPE I
- ⊗ STORM MANHOLE
- SEWER MANHOLE
- ⋈ WATER VALVE
- ⊞ WATER METER
- ⊞ GAS VALVE
- ⊕ MONUMENT
- ⊕ TELECOMM MANHOLE

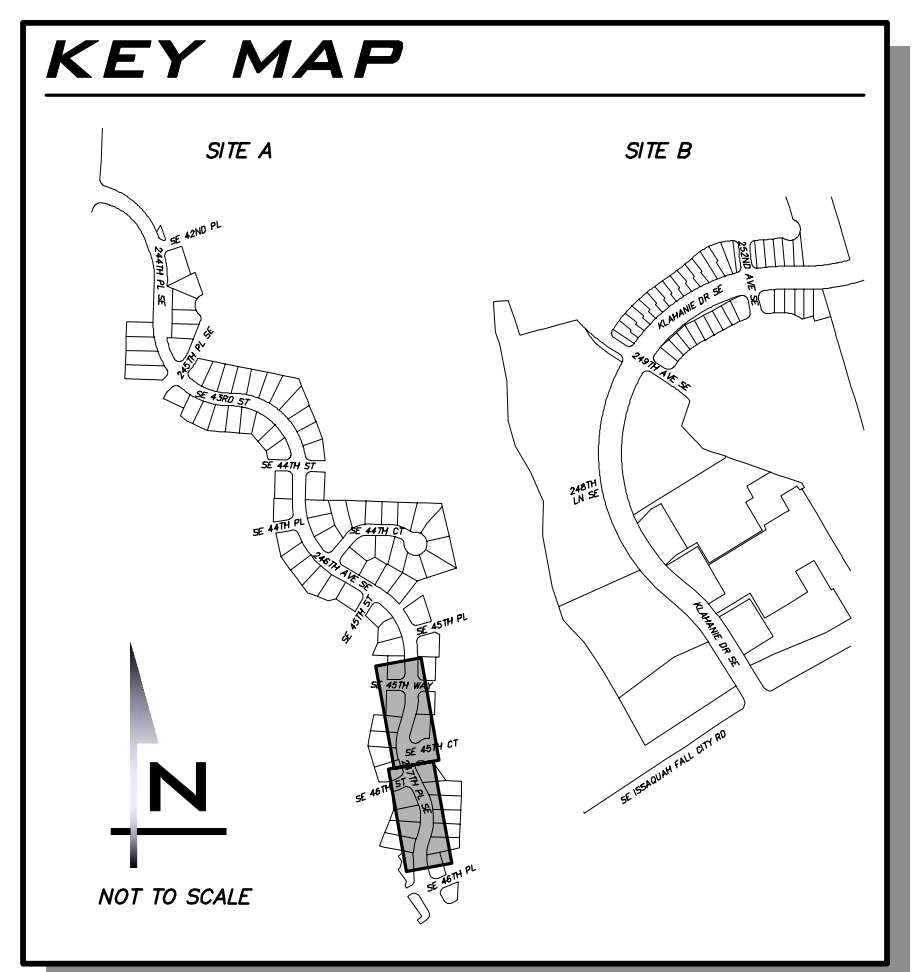
22,34
 May 24, 2023 - 2:53pm - User: cdoggett
 E:\Projects\22224\Drawings\22224OP.dwg



LEGEND

- 10' WIDE EDGE GRIND AND 1.5" OVERLAY (SEE DETAIL ON SHEET DT-01)
- 10' WIDE EDGE GRIND AND 2" OVERLAY (SEE DETAIL ON SHEET DT-01)
- 2" DEPTH GRIND AND OVERLAY (SEE DETAIL ON SHEET DT-01)
- TEMPORARY ACCESS AND MAINTENANCE TO ADA RAMPS REQUIRED

- GENERAL NOTES**
1. INFORMATION FOR THIS SITE IS NOT SURVEYED AND MAY NOT INCLUDE ALL RELEVANT INFORMATION. PLAN SHEETS ARE A GUIDELINE.
 2. COORDINATE ALL PAVING LIMITS WITH THE ENGINEER.
 3. CONTRACTOR SHALL ADJUST UTILITIES TO FINAL GRADE.
 4. ALL PAVEMENT MARKINGS SHALL BE REFERENCED AND REPLACED IN THE SAME LOCATION, UNLESS OTHERWISE NOTED ON PLANS.



BLUELINE

25 CENTRAL WAY, SUITE 400,
 KIRKLAND, WA 98033
 P: 425.216.4051 F: 425.216.4052
 WWW.THEBLUELINEGROUP.COM

SCALE:
 AS NOTED

PROJECT MANAGER:
 ROB DAHN, PE

PROJECT ENGINEER:
 GRACE GARWIN, EIT

DESIGNER:
 CAROL DOGGETT

ISSUE DATE:
 5/24/2023

NO	DATE	BY	REVISIONS

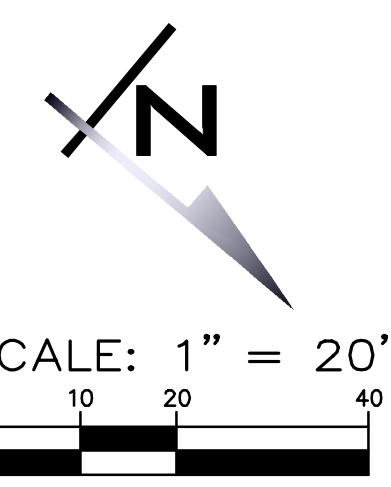
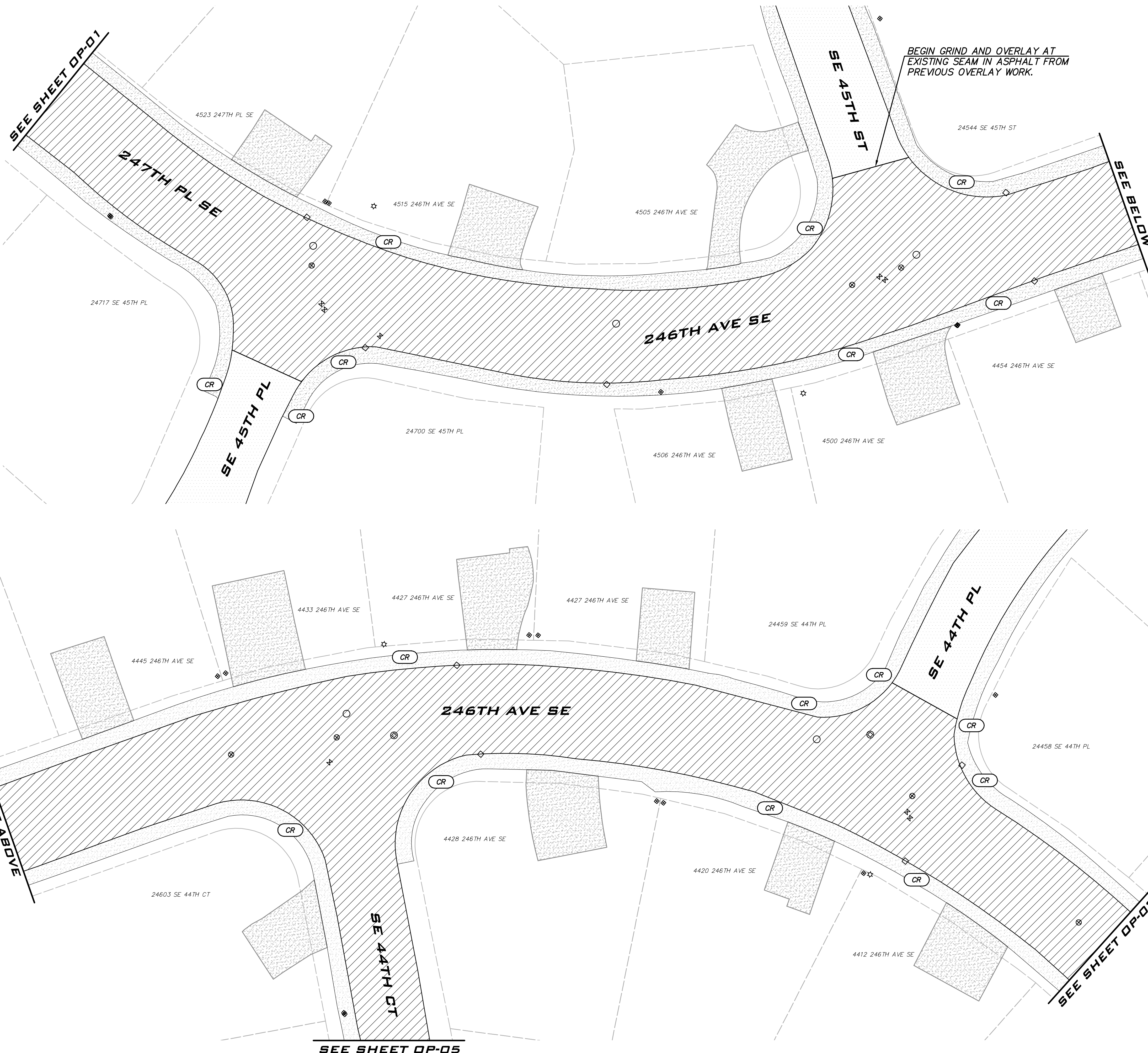
OVERLAY PLAN - SITE A -
 247TH PL SE
 2023 OVERLAY PROJECT
 CITY OF SAMMAMISH WASHINGTON

5/26/23

JOB NUMBER:
22-224

SHEET NAME:
OP-01

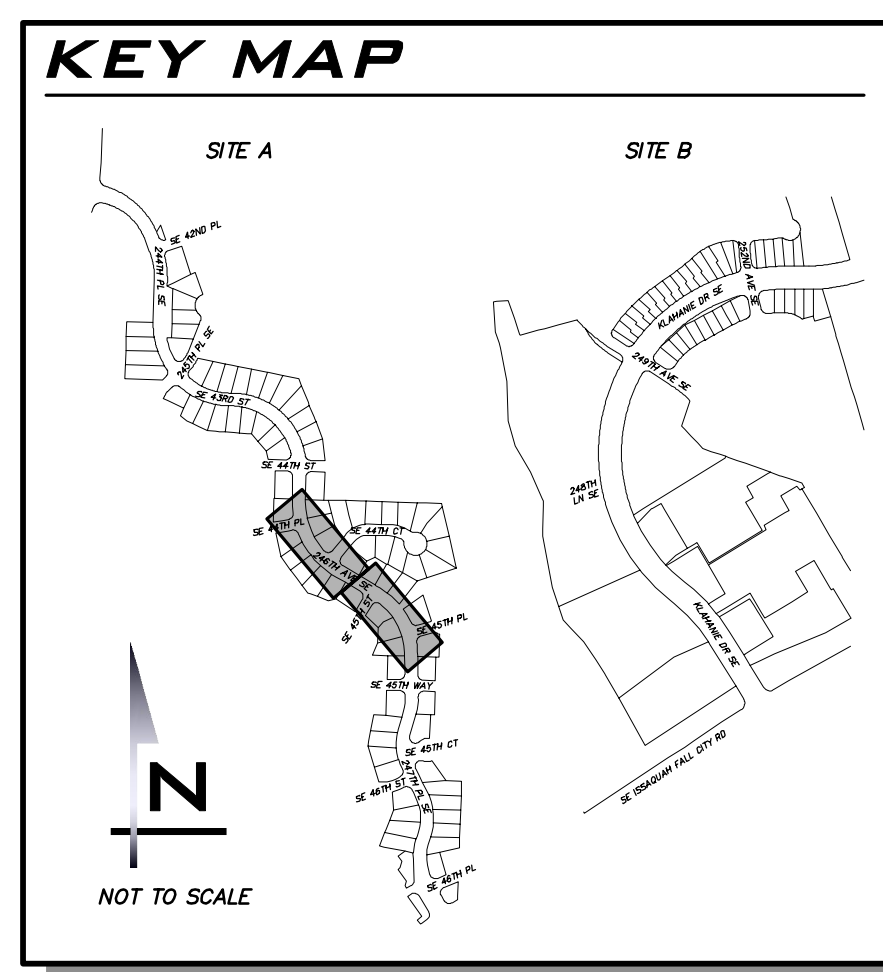
SHT **3** OF **13**



LEGEND

- 10' WIDE EDGE GRIND AND 1.5" OVERLAY (SEE DETAIL ON SHEET DT-01)
- 10' WIDE EDGE GRIND AND 2" OVERLAY (SEE DETAIL ON SHEET DT-01)
- 2" DEPTH GRIND AND OVERLAY (SEE DETAIL ON SHEET DT-01)
- TEMPORARY ACCESS AND MAINTENANCE TO ADA RAMPS REQUIRED

- GENERAL NOTES**
1. INFORMATION FOR THIS SITE IS NOT SURVEYED AND MAY NOT INCLUDE ALL RELEVANT INFORMATION. PLAN SHEETS ARE A GUIDELINE.
 2. COORDINATE ALL PAVING LIMITS WITH THE ENGINEER.
 3. CONTRACTOR SHALL ADJUST UTILITIES TO FINAL GRADE.
 4. ALL PAVEMENT MARKINGS SHALL BE REFERENCED AND REPLACED IN THE SAME LOCATION, UNLESS OTHERWISE NOTED ON PLANS.



BLUELINE

25 CENTRAL WAY, SUITE 400,
KIRKLAND, WA 98033
P: 425.216.4051 F: 425.216.4052
WWW.THEBLUELINEGROUP.COM

SCALE:
AS NOTED

PROJECT MANAGER:
ROB DAHN, PE

PROJECT ENGINEER:
GRACE GARWIN, EIT

DESIGNER:
CAROL DOGGETT

ISSUE DATE:
5/24/2023

NO	DATE	BY	REVISIONS

**OVERLAY PLAN - SITE A -
246TH PL SE
2023 OVERLAY PROJECT**

CITY OF SAMMAMISH WASHINGTON

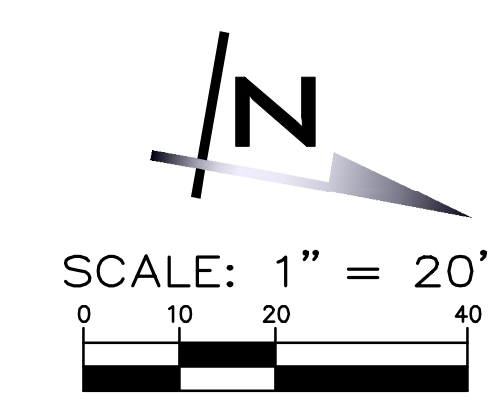
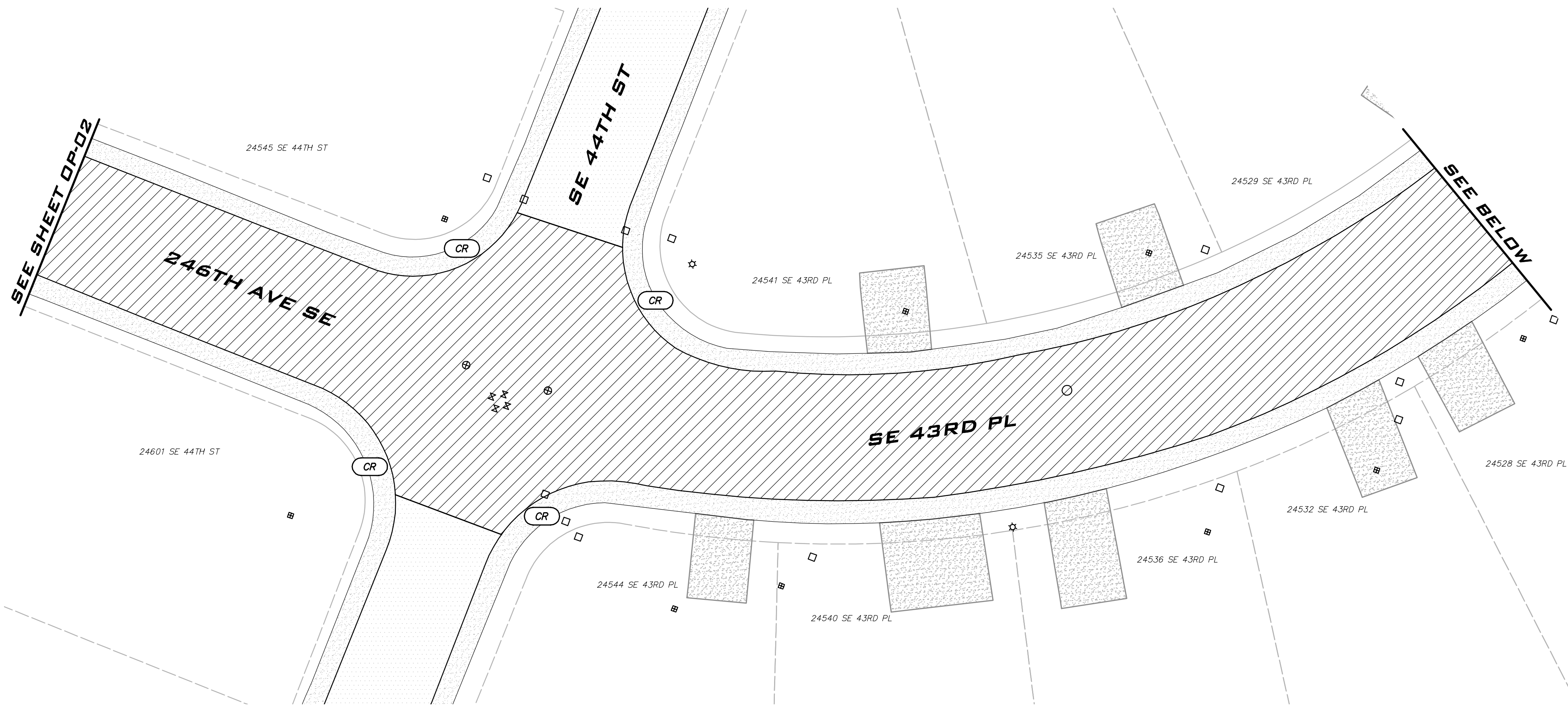
5/26/23

JOB NUMBER:
22-224

SHEET NAME:
OP-02

SHT **4** OF **13**

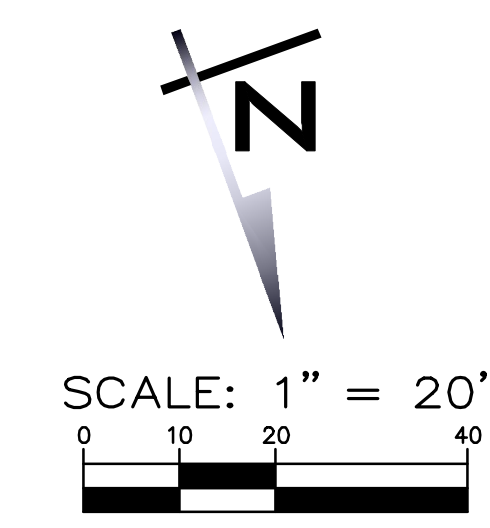
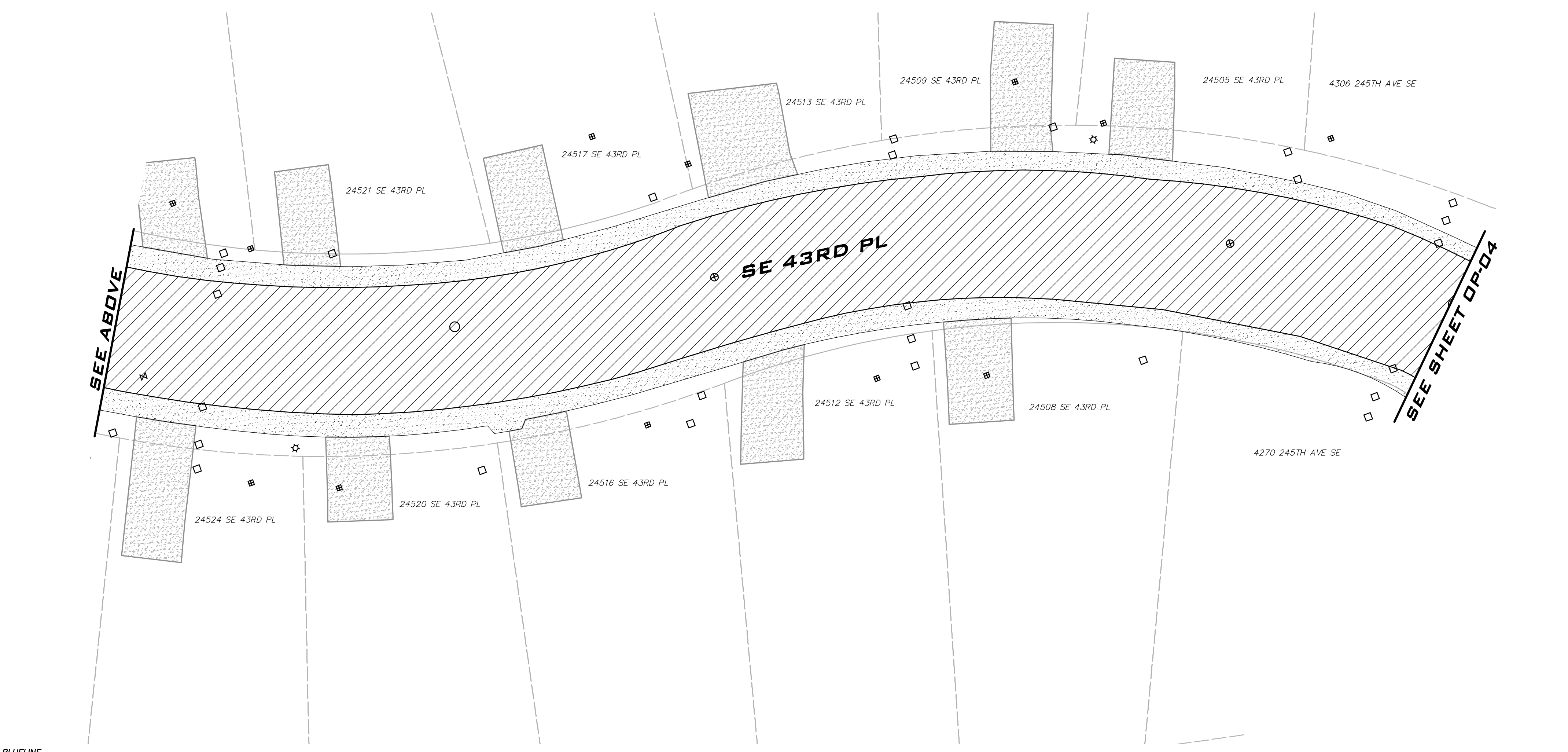
22x34
May 24, 2023 - 2:53pm - User: cadoggett
E:\Projects\22224\Draw\Plans\22224OP.dwg
© 2023 BLUELINE



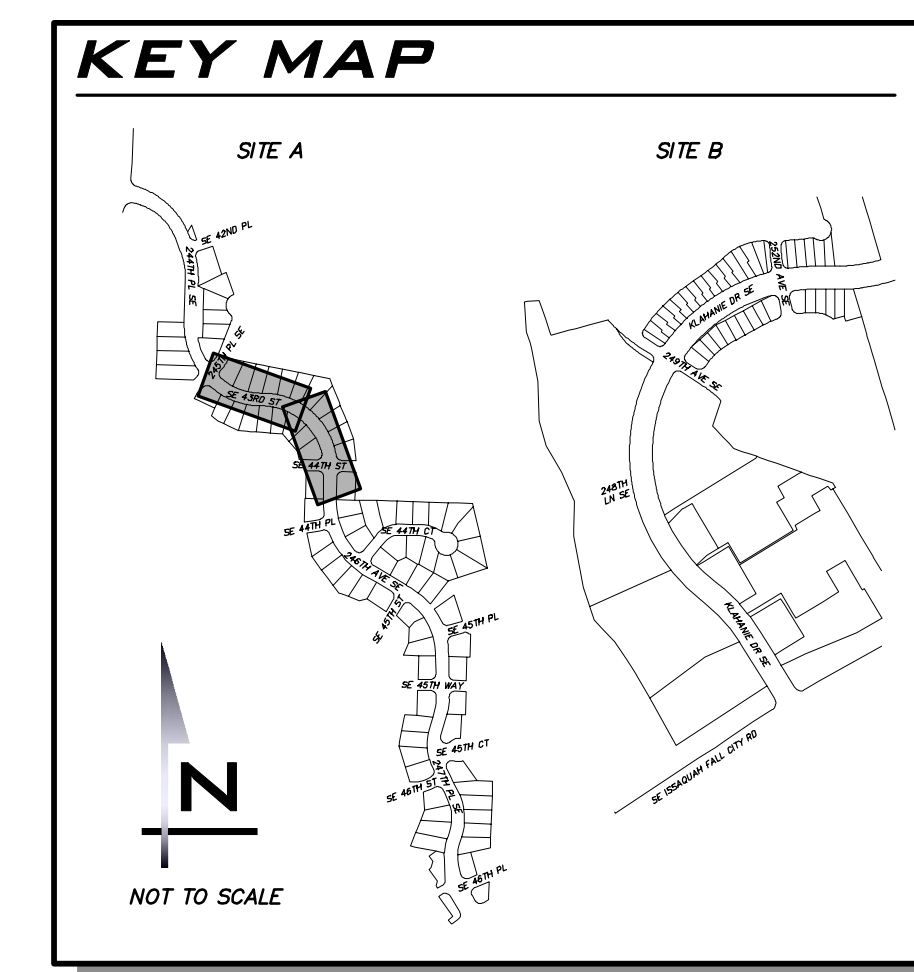
LEGEND

- 10' WIDE EDGE GRIND AND 1.5" OVERLAY (SEE DETAIL ON SHEET DT-01)
- 10' WIDE EDGE GRIND AND 2" OVERLAY (SEE DETAIL ON SHEET DT-01)
- 2" DEPTH GRIND AND OVERLAY (SEE DETAIL ON SHEET DT-01)
- TEMPORARY ACCESS AND MAINTENANCE TO ADA RAMPS REQUIRED

CR



- GENERAL NOTES**
1. INFORMATION FOR THIS SITE IS NOT SURVEYED AND MAY NOT INCLUDE ALL RELEVANT INFORMATION. PLAN SHEETS ARE A GUIDELINE.
 2. COORDINATE ALL PAVING LIMITS WITH THE ENGINEER.
 3. CONTRACTOR SHALL ADJUST UTILITIES TO FINAL GRADE.
 4. ALL PAVEMENT MARKINGS SHALL BE REFERENCED AND REPLACED IN THE SAME LOCATION, UNLESS OTHERWISE NOTED ON PLANS.



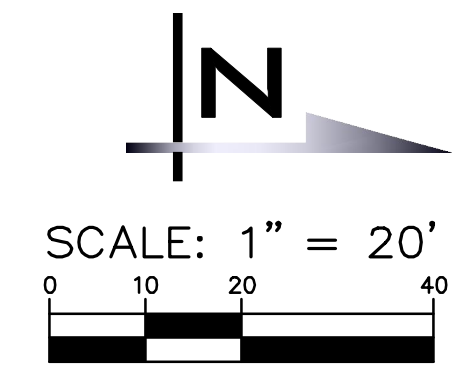
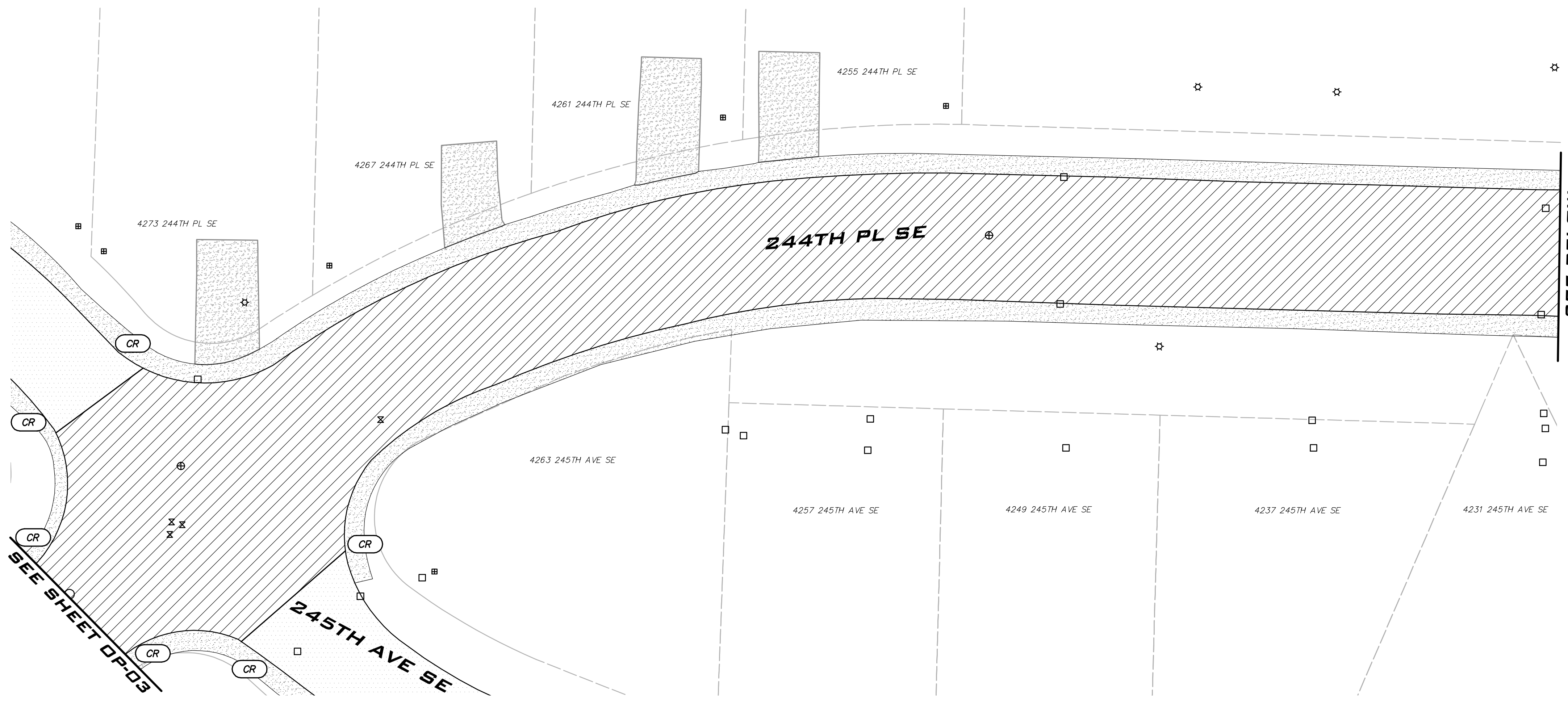
BLUELINE
25 CENTRAL WAY, SUITE 400,
KIRKLAND, WA 98033
P: 425.216.4051 F: 425.216.4052
WWW.THEBLUELINEGROUP.COM

SCALE:
AS NOTED
PROJECT MANAGER:
ROB DAHN, PE
PROJECT ENGINEER:
GRACE GARWIN, EIT
DESIGNER:
CAROL DOGGETT
ISSUE DATE:
5/24/2023

NO	DATE	BY	REVISIONS

OVERLAY PLAN - SITE A -
SE 43RD PL
2023 OVERLAY PROJECT
CITY OF SAMMAMISH WASHINGTON

5/26/23
JOB NUMBER:
22-224
SHEET NAME:
OP-03
SHT **5** OF **13**



LEGEND

- 10' WIDE EDGE GRIND AND 1.5" OVERLAY (SEE DETAIL ON SHEET DT-01)
- 10' WIDE EDGE GRIND AND 2" OVERLAY (SEE DETAIL ON SHEET DT-01)
- 2" DEPTH GRIND AND OVERLAY (SEE DETAIL ON SHEET DT-01)
- TEMPORARY ACCESS AND MAINTENANCE TO ADA RAMPS REQUIRED

25 CENTRAL WAY, SUITE 400,
KIRKLAND, WA 98033
P: 425.216.4051 F: 425.216.4052
WWW.THEBLUELINEGROUP.COM

SCALE:
AS NOTED

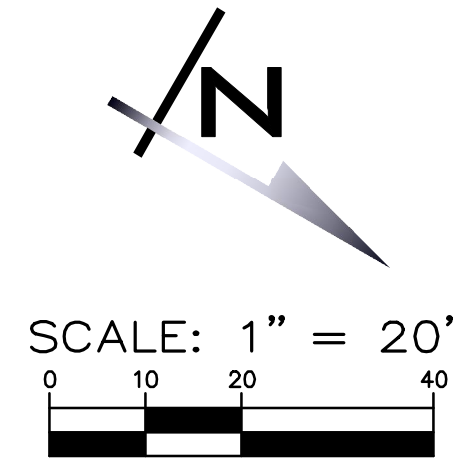
PROJECT MANAGER:
ROB DAHN, PE

PROJECT ENGINEER:
GRACE GARWIN, EIT

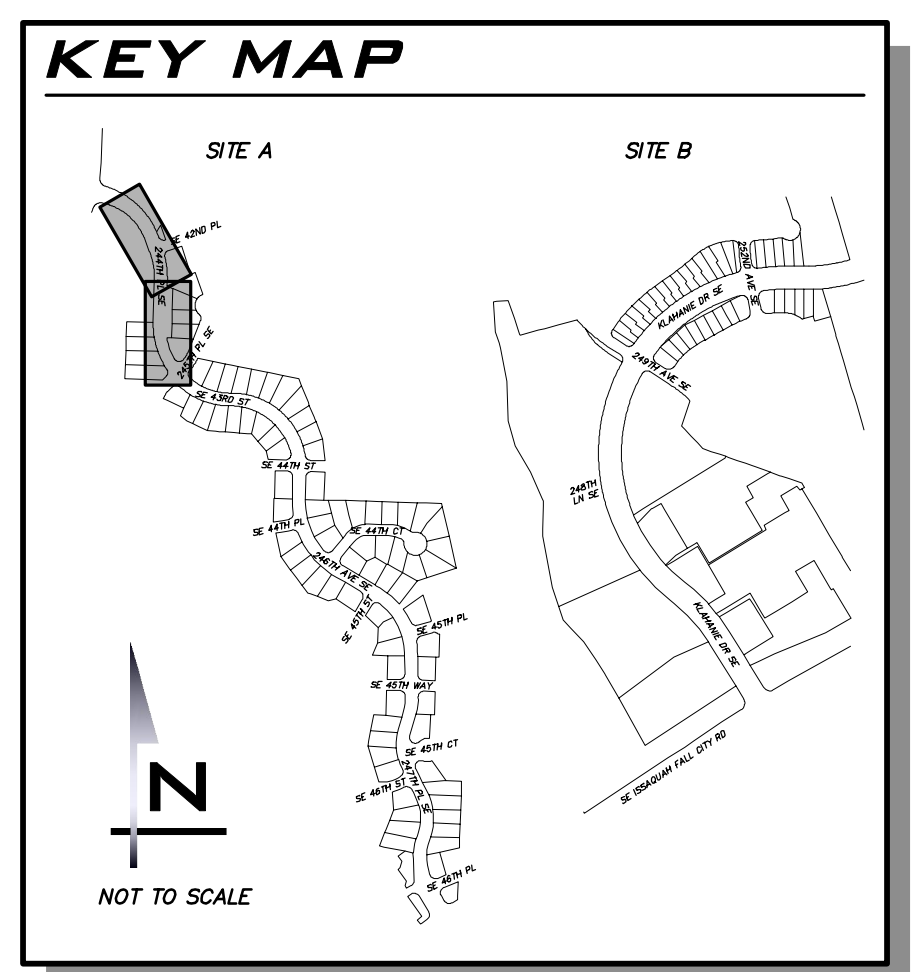
DESIGNER:
CAROL DOGGETT

ISSUE DATE:
5/24/2023

NO	DATE	BY	REVISIONS



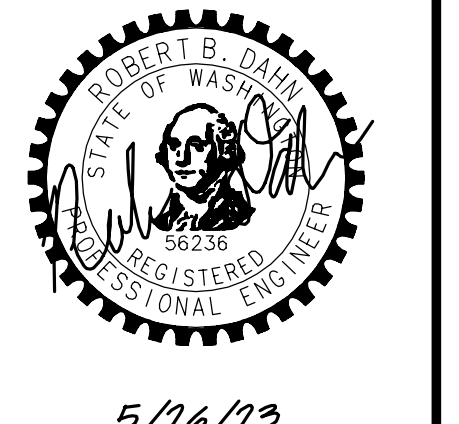
- GENERAL NOTES**
1. INFORMATION FOR THIS SITE IS NOT SURVEYED AND MAY NOT INCLUDE ALL RELEVANT INFORMATION. PLAN SHEETS ARE A GUIDELINE.
 2. COORDINATE ALL PAVING LIMITS WITH THE ENGINEER.
 3. CONTRACTOR SHALL ADJUST UTILITIES TO FINAL GRADE.
 4. ALL PAVEMENT MARKINGS SHALL BE REFERENCED AND REPLACED IN THE SAME LOCATION, UNLESS OTHERWISE NOTED ON PLANS.



OVERLAY PLAN - SITE A - 244TH PL SE

2023 OVERLAY PROJECT

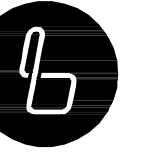
CITY OF SAMMAMISH WASHINGTON



5/26/23

JOB NUMBER:
22-224

SHEET NAME:
OP-04



BLUELINE

25 CENTRAL WAY, SUITE 400,
KIRKLAND, WA 98033
P: 425.216.4051 F: 425.216.4052
WWW.THEBLUELINEGROUP.COM

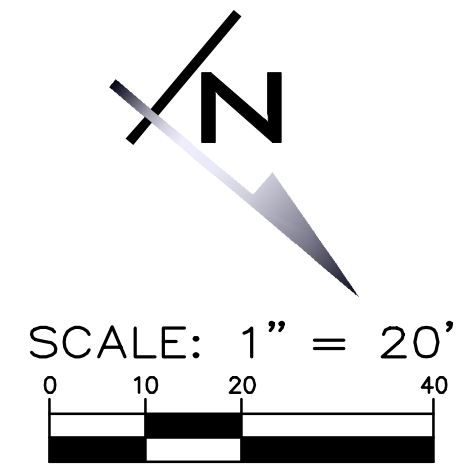
SCALE:
AS NOTED

PROJECT MANAGER:
ROB DAHN, PE

PROJECT ENGINEER:
GRACE GARWIN, EIT


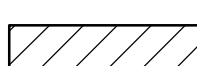


DESIGNER:
CAROL DOGGETT

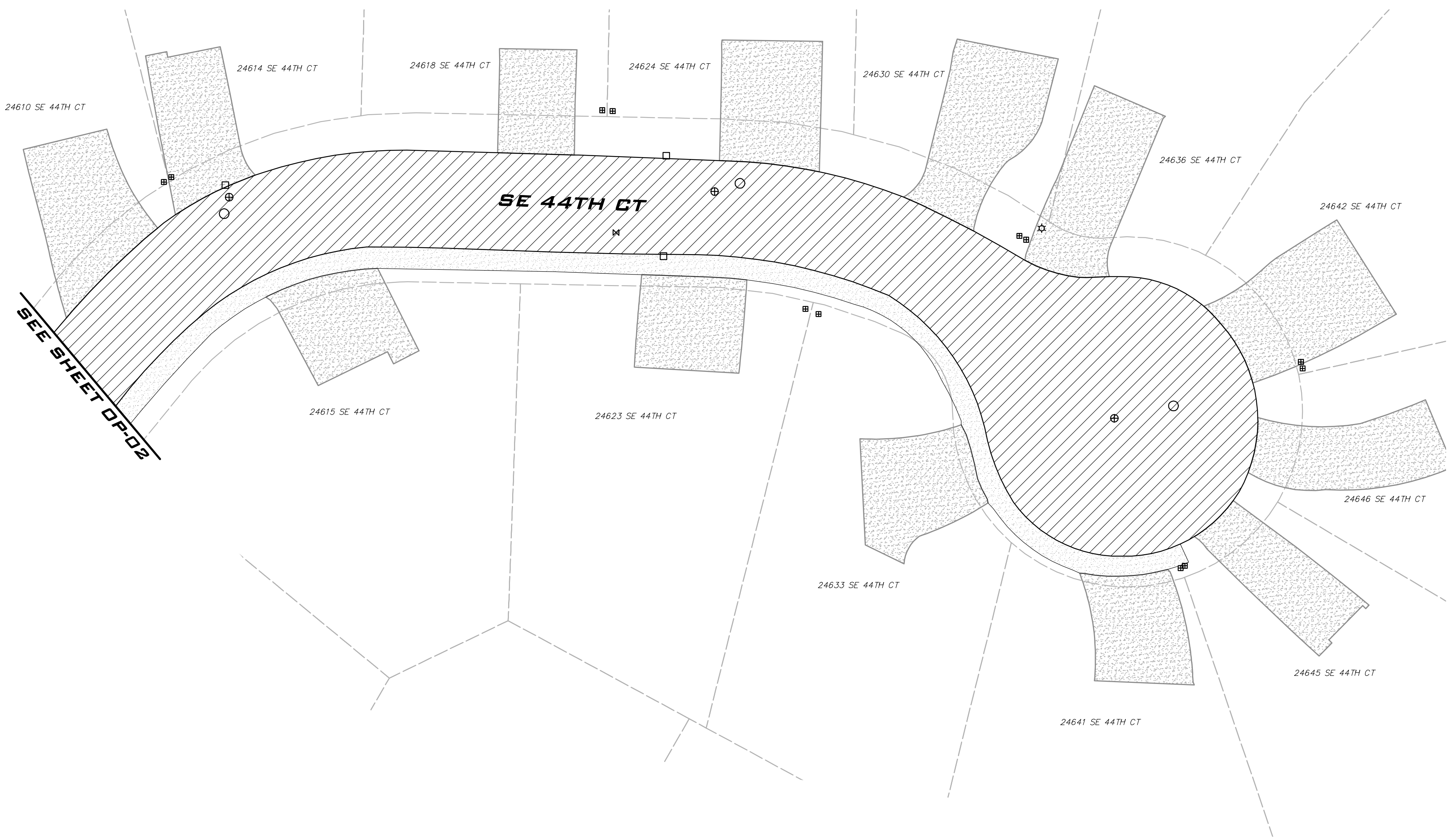
ISSUE DATE:
5/24/2023



SCALE: 1" = 20'

LEGEND

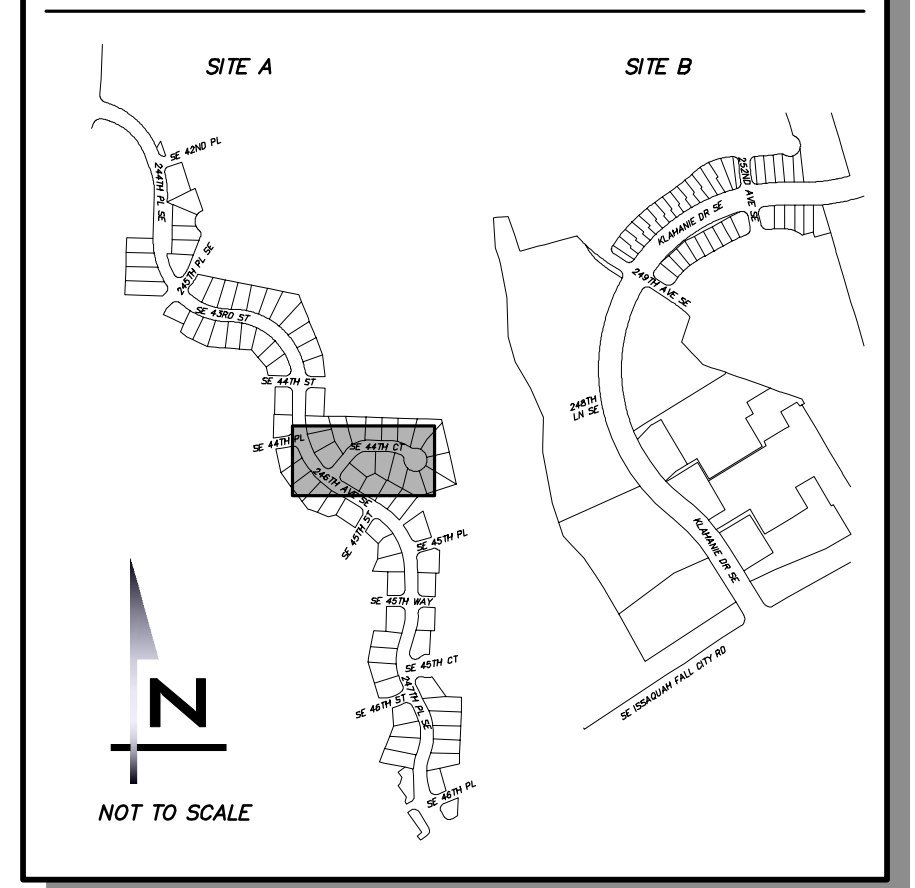
-  10' WIDE EDGE GRIND AND 1.5" OVERLAY (SEE DETAIL ON SHEET DT-01)
-  10' WIDE EDGE GRIND AND 2" OVERLAY (SEE DETAIL ON SHEET DT-01)
-  2" DEPTH GRIND AND OVERLAY (SEE DETAIL ON SHEET DT-01)
-  TEMPORARY ACCESS AND MAINTENANCE TO ADA RAMPS REQUIRED



GENERAL NOTES

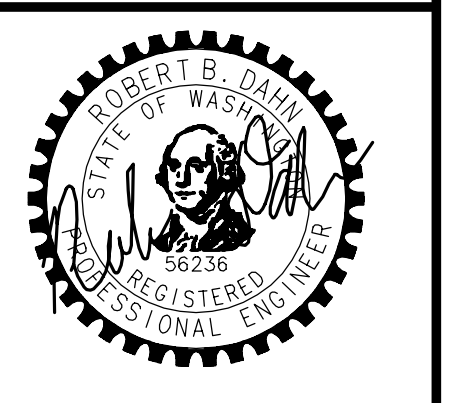
1. INFORMATION FOR THIS SITE IS NOT SURVEYED AND MAY NOT INCLUDE ALL RELEVANT INFORMATION. PLAN SHEETS ARE A GUIDELINE.
2. COORDINATE ALL PAVING LIMITS WITH THE ENGINEER.
3. CONTRACTOR SHALL ADJUST UTILITIES TO FINAL GRADE.
4. ALL PAVEMENT MARKINGS SHALL BE REFERENCED AND REPLACED IN THE SAME LOCATION, UNLESS OTHERWISE NOTED ON PLANS.

KEY MAP



NO	DATE	BY	REVISIONS

OVERLAY PLAN - SITE A -
 SE 44TH CT
 2023 OVERLAY PROJECT
 CITY OF SAMMAMISH WASHINGTON

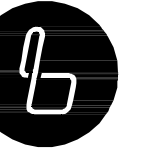


5/26/23

JOB NUMBER:
22-224

SHEET NAME:
OP-05

SHT **7** OF **13**



BLUELINE

25 CENTRAL WAY, SUITE 400,
KIRKLAND, WA 98033
P: 425.216.4051 F: 425.216.4052
WWW.THEBLUELINEGROUP.COM

SCALE:
AS NOTED

PROJECT MANAGER:
ROB DAHN, PE

PROJECT ENGINEER:
GRACE GARWIN, EIT

DESIGNER:
CAROL DOGGETT

ISSUE DATE:
5/24/2023

REVISIONS

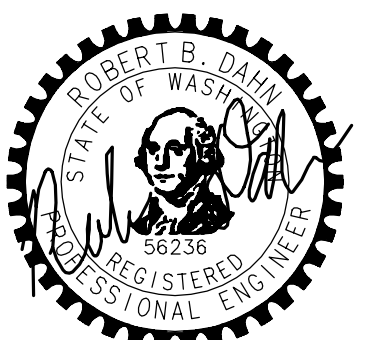
BY

DATE

NO

**OVERLAY PLAN - SITE B -
KLAHANIE DR SE
2023 OVERLAY PROJECT**

CITY OF SAMMAMISH WASHINGTON

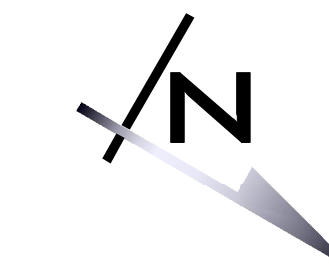


5/26/23

JOB NUMBER:
22-224

SHEET NAME:
OP-06


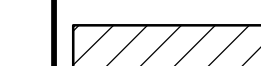


SHT **8** OF **13**



SCALE: 1" = 20'



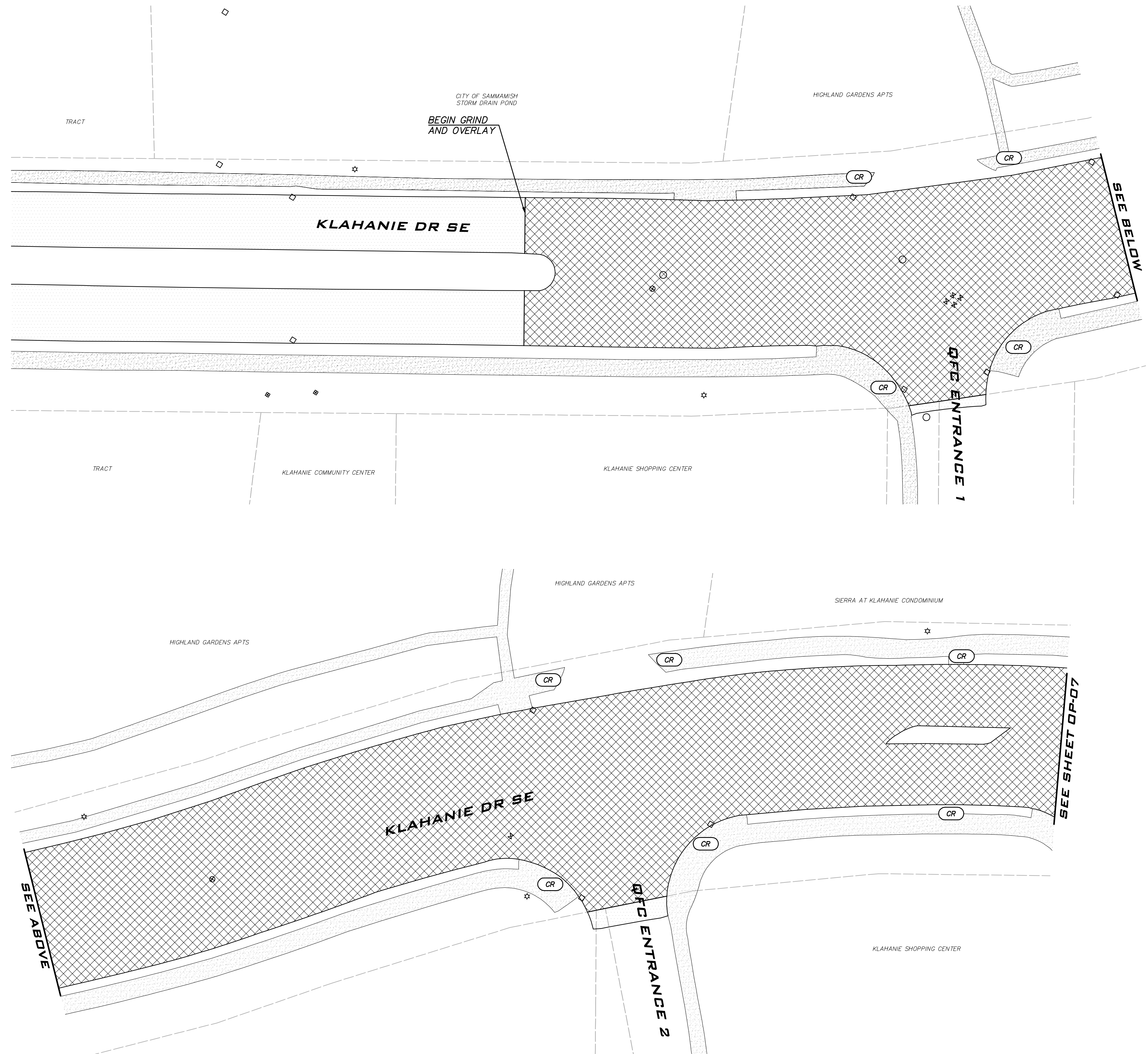
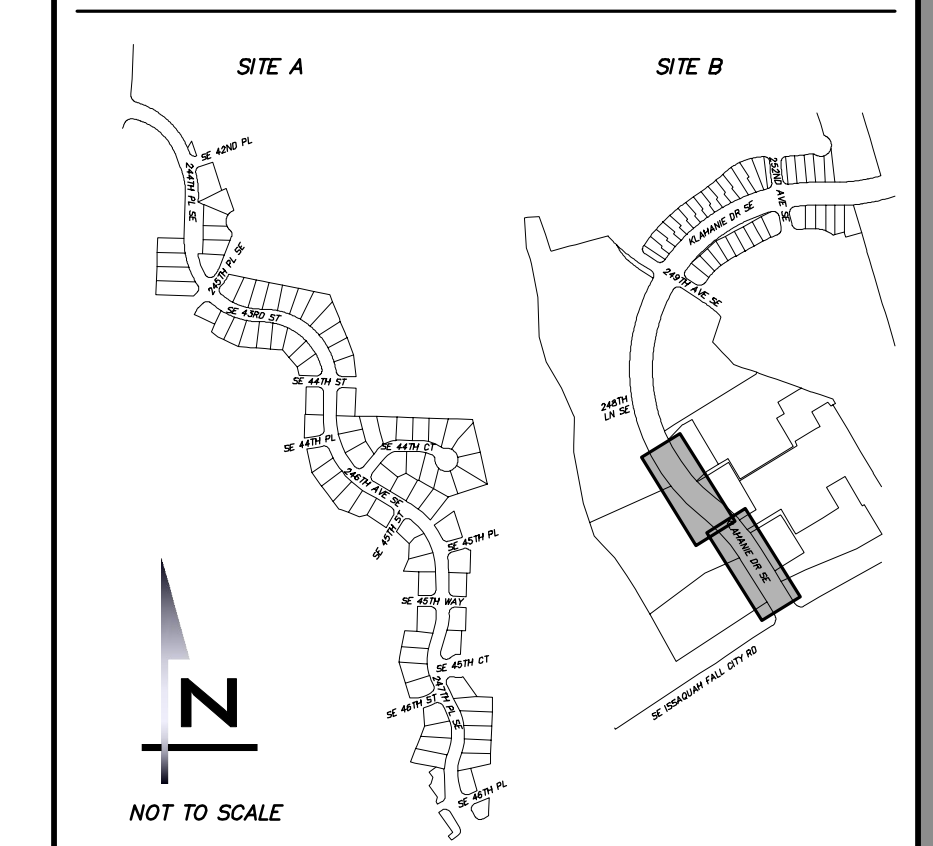
LEGEND

-  10' WIDE EDGE GRIND AND 1.5" OVERLAY (SEE DETAIL ON SHEET DT-01)
-  10' WIDE EDGE GRIND AND 2" OVERLAY (SEE DETAIL ON SHEET DT-01)
-  2" DEPTH GRIND AND OVERLAY (SEE DETAIL ON SHEET DT-01)
-  TEMPORARY ACCESS AND MAINTENANCE TO ADA RAMPS REQUIRED

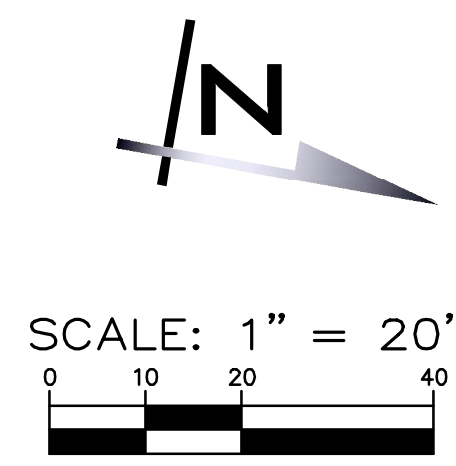
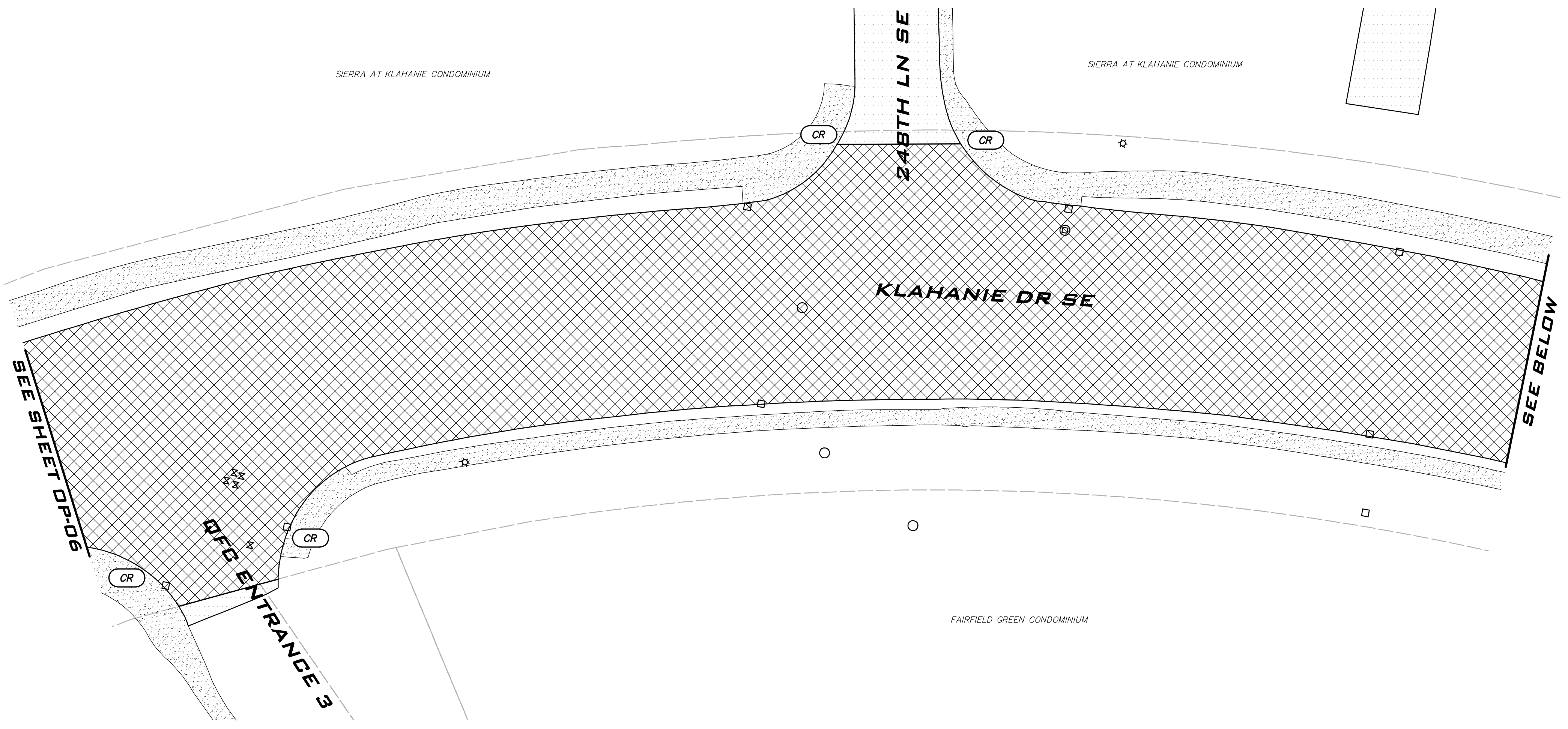
GENERAL NOTES

1. INFORMATION FOR THIS SITE IS NOT SURVEYED AND MAY NOT INCLUDE ALL RELEVANT INFORMATION. PLAN SHEETS ARE A GUIDELINE.
2. COORDINATE ALL PAVING LIMITS WITH THE ENGINEER.
3. CONTRACTOR SHALL ADJUST UTILITIES TO FINAL GRADE.
4. ALL PAVEMENT MARKINGS SHALL BE REFERENCED AND REPLACED IN THE SAME LOCATION, UNLESS OTHERWISE NOTED ON PLANS.

KEY MAP



22/34
May 24, 2023 - 2:54pm - User: cdoggett
E:\Projects\22224\Draw\Plans\22224OP.dwg
© 2023 BLUELINE



LEGEND

- 10' WIDE EDGE GRIND AND 1.5" OVERLAY (SEE DETAIL ON SHEET DT-01)
- 10' WIDE EDGE GRIND AND 2" OVERLAY (SEE DETAIL ON SHEET DT-01)
- 2" DEPTH GRIND AND OVERLAY (SEE DETAIL ON SHEET DT-01)
- TEMPORARY ACCESS AND MAINTENANCE TO ADA RAMPS REQUIRED

BLUELINE

25 CENTRAL WAY, SUITE 400,
KIRKLAND, WA 98033
P: 425.216.4051 F: 425.216.4052
WWW.THEBLUELINEGROUP.COM

SCALE:
AS NOTED

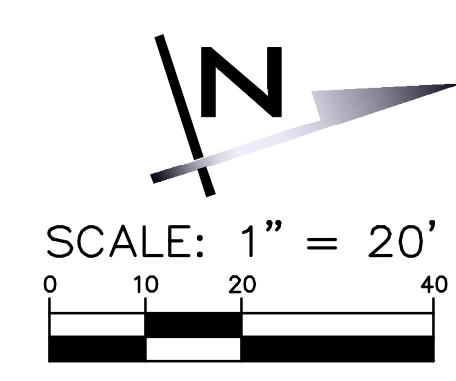
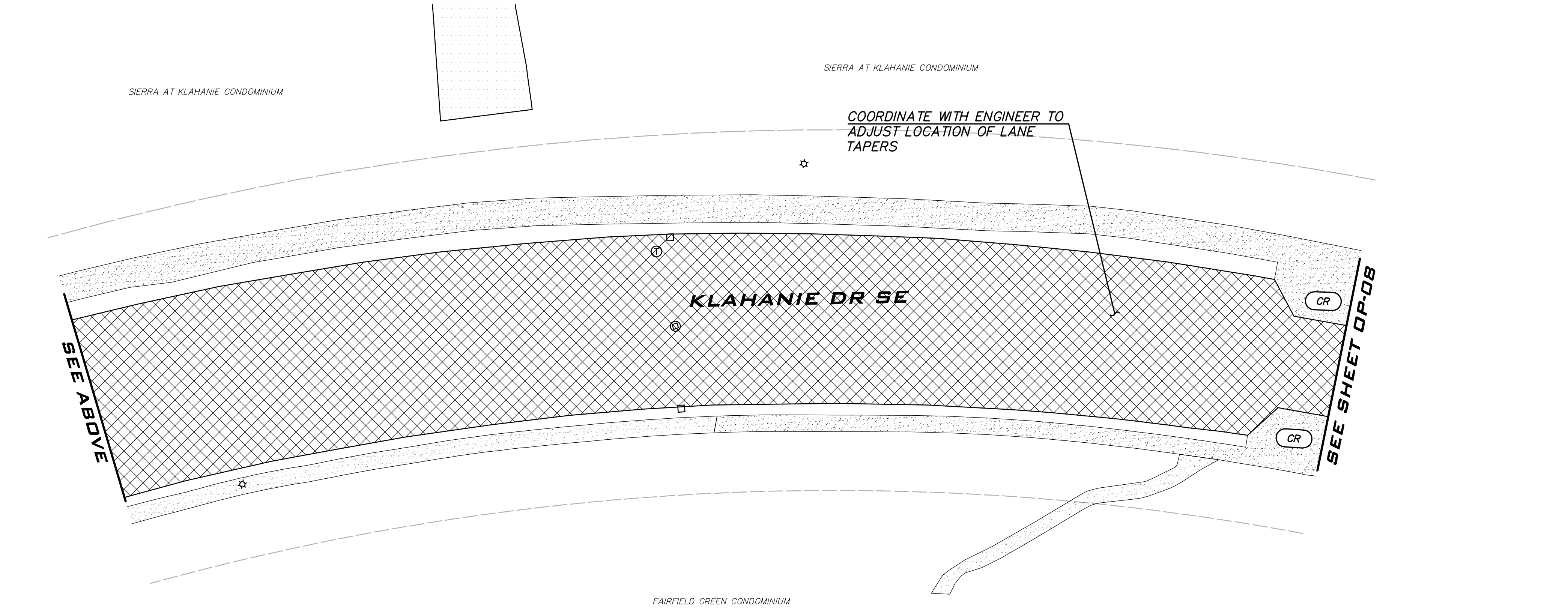
PROJECT MANAGER:
ROB DAHN, PE

PROJECT ENGINEER:
GRACE GARWIN, EIT

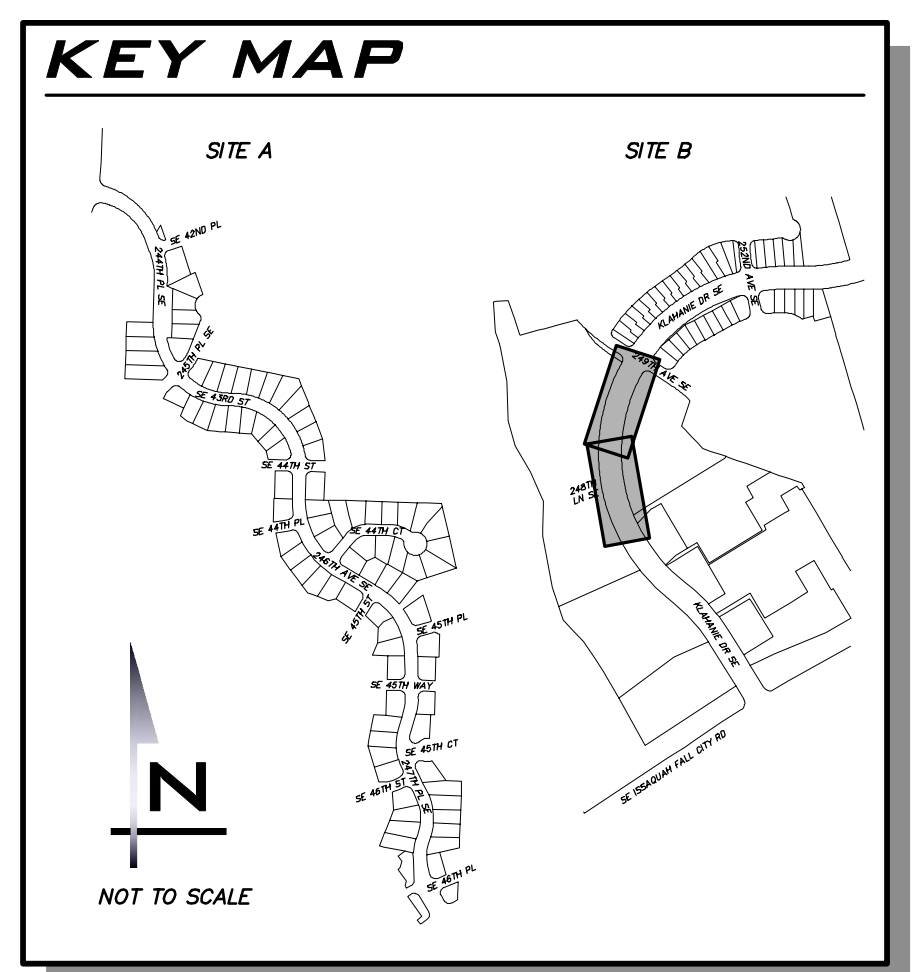
DESIGNER:
CAROL DOGGETT

ISSUE DATE:
5/24/2023

NO	DATE	BY	REVISIONS



- GENERAL NOTES**
1. INFORMATION FOR THIS SITE IS NOT SURVEYED AND MAY NOT INCLUDE ALL RELEVANT INFORMATION. PLAN SHEETS ARE A GUIDELINE.
 2. COORDINATE ALL PAVING LIMITS WITH THE ENGINEER.
 3. CONTRACTOR SHALL ADJUST UTILITIES TO FINAL GRADE.
 4. ALL PAVEMENT MARKINGS SHALL BE REFERENCED AND REPLACED IN THE SAME LOCATION, UNLESS OTHERWISE NOTED ON PLANS.



**OVERLAY PLAN - SITE B -
KLAHANIE DR SE
2023 OVERLAY PROJECT**

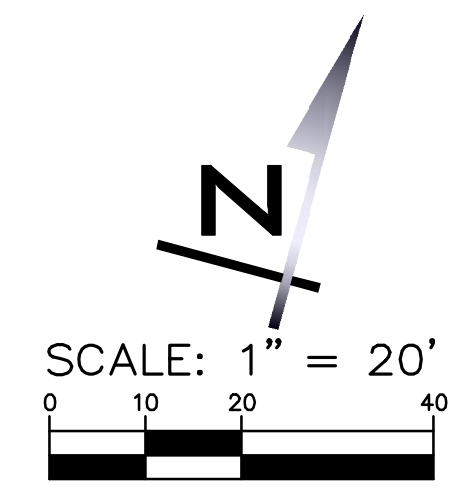
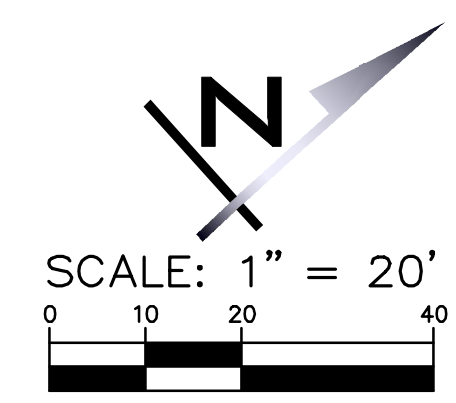
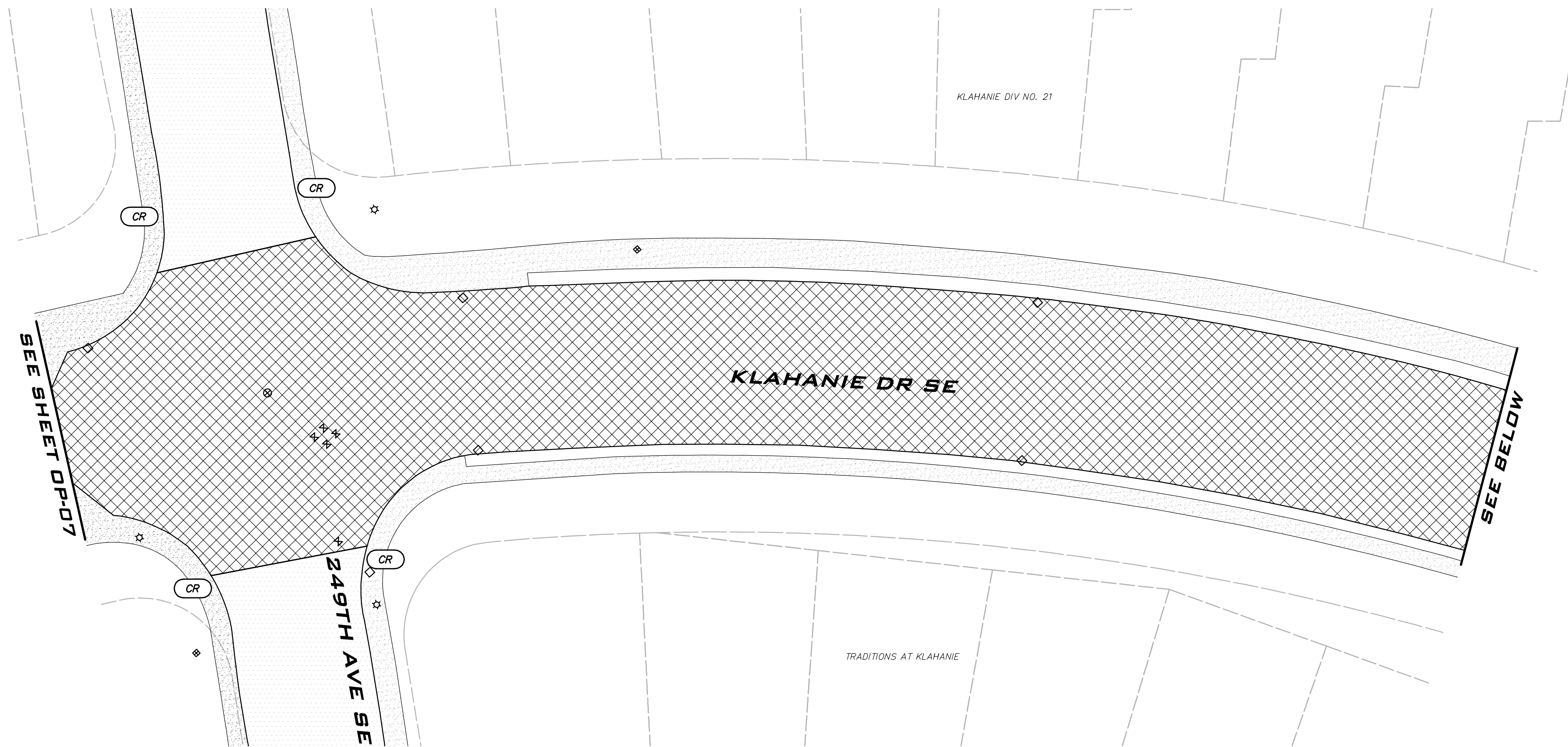
WASHINGTON
CITY OF SAMMAMISH

5/26/23

JOB NUMBER:
22-224

SHEET NAME:
OP-07

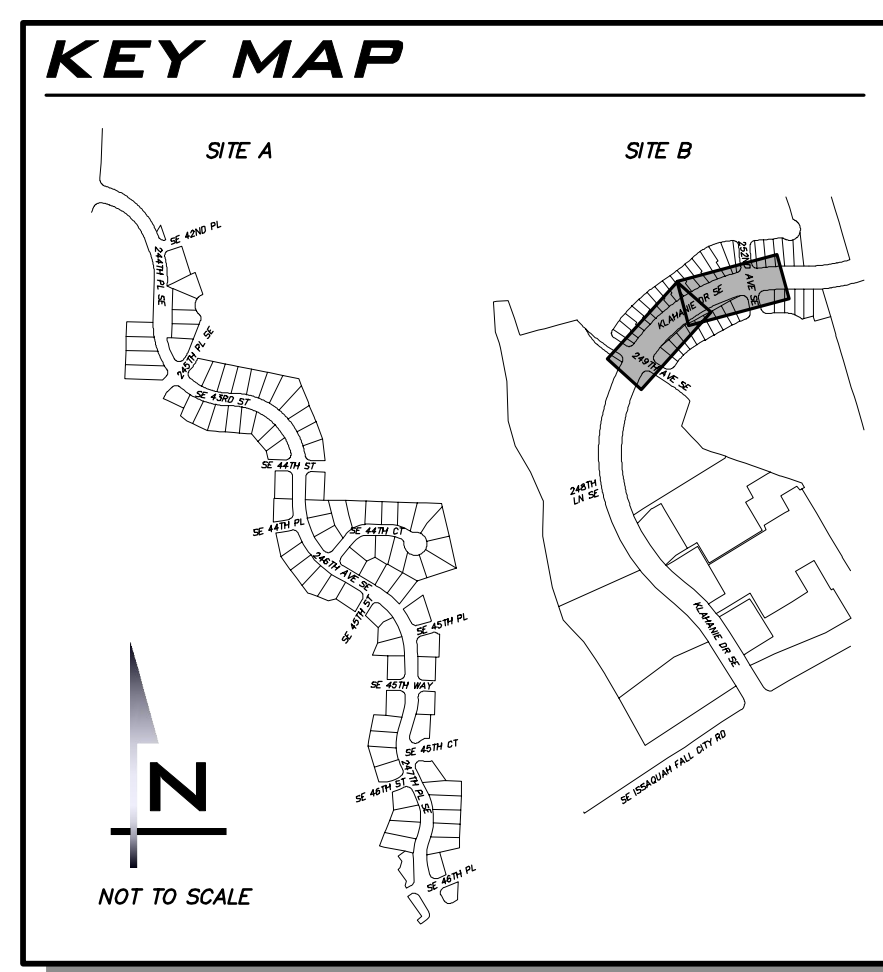
SHT **9** OF **13**



LEGEND

- 10' WIDE EDGE GRIND AND 1.5" OVERLAY (SEE DETAIL ON SHEET DT-01)
- 10' WIDE EDGE GRIND AND 2" OVERLAY (SEE DETAIL ON SHEET DT-01)
- 2" DEPTH GRIND AND OVERLAY (SEE DETAIL ON SHEET DT-01)
- TEMPORARY ACCESS AND MAINTENANCE TO ADA RAMPS REQUIRED

- GENERAL NOTES**
1. INFORMATION FOR THIS SITE IS NOT SURVEYED AND MAY NOT INCLUDE ALL RELEVANT INFORMATION. PLAN SHEETS ARE A GUIDELINE.
 2. COORDINATE ALL PAVING LIMITS WITH THE ENGINEER.
 3. CONTRACTOR SHALL ADJUST UTILITIES TO FINAL GRADE.
 4. ALL PAVEMENT MARKINGS SHALL BE REFERENCED AND REPLACED IN THE SAME LOCATION, UNLESS OTHERWISE NOTED ON PLANS.



BLUELINE

25 CENTRAL WAY, SUITE 400,
KIRKLAND, WA 98033
P: 425.216.4051 F: 425.216.4052
WWW.THEBLUELINEGROUP.COM

SCALE:
AS NOTED

PROJECT MANAGER:
ROB DAHN, PE

PROJECT ENGINEER:
GRACE GARWIN, EIT

DESIGNER:
CAROL DOGGETT

ISSUE DATE:
5/24/2023

NO	DATE	BY	REVISIONS

**OVERLAY PLAN - SITE B -
KLAHANIE DR SE
2023 OVERLAY PROJECT**

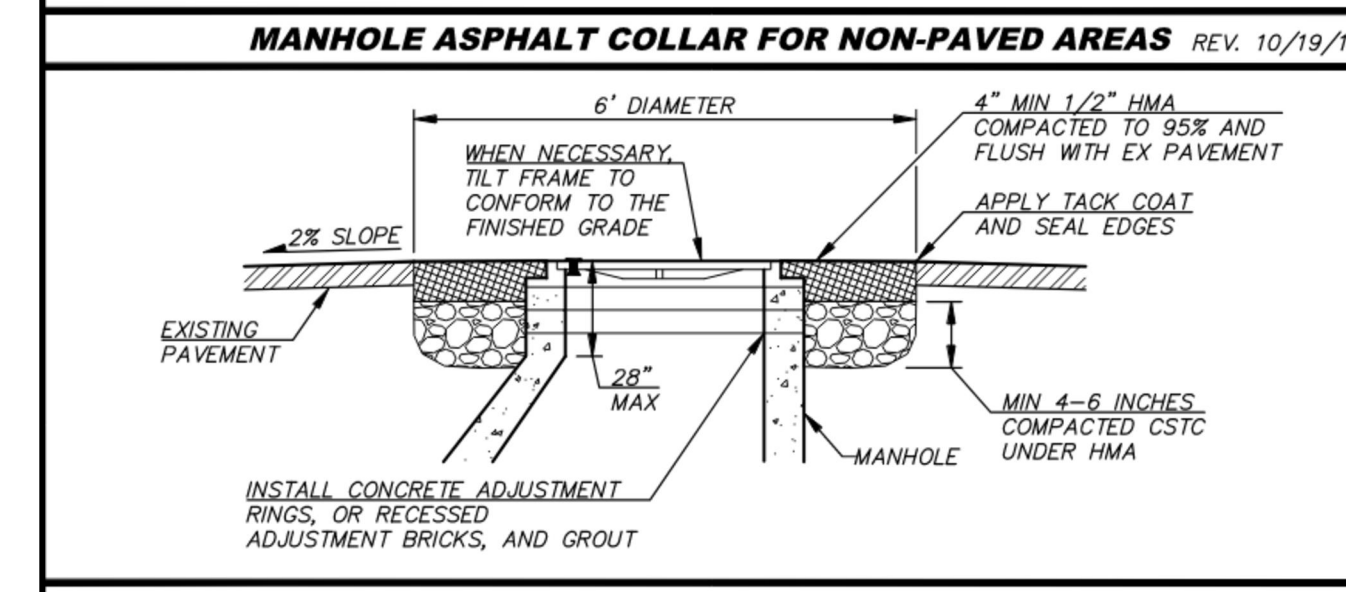
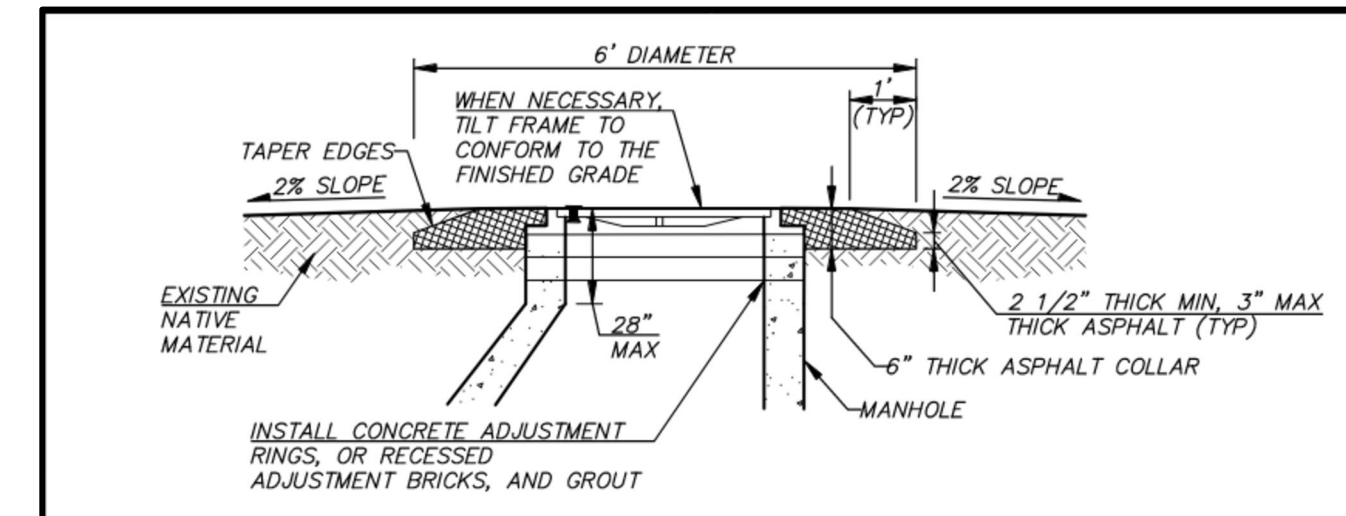
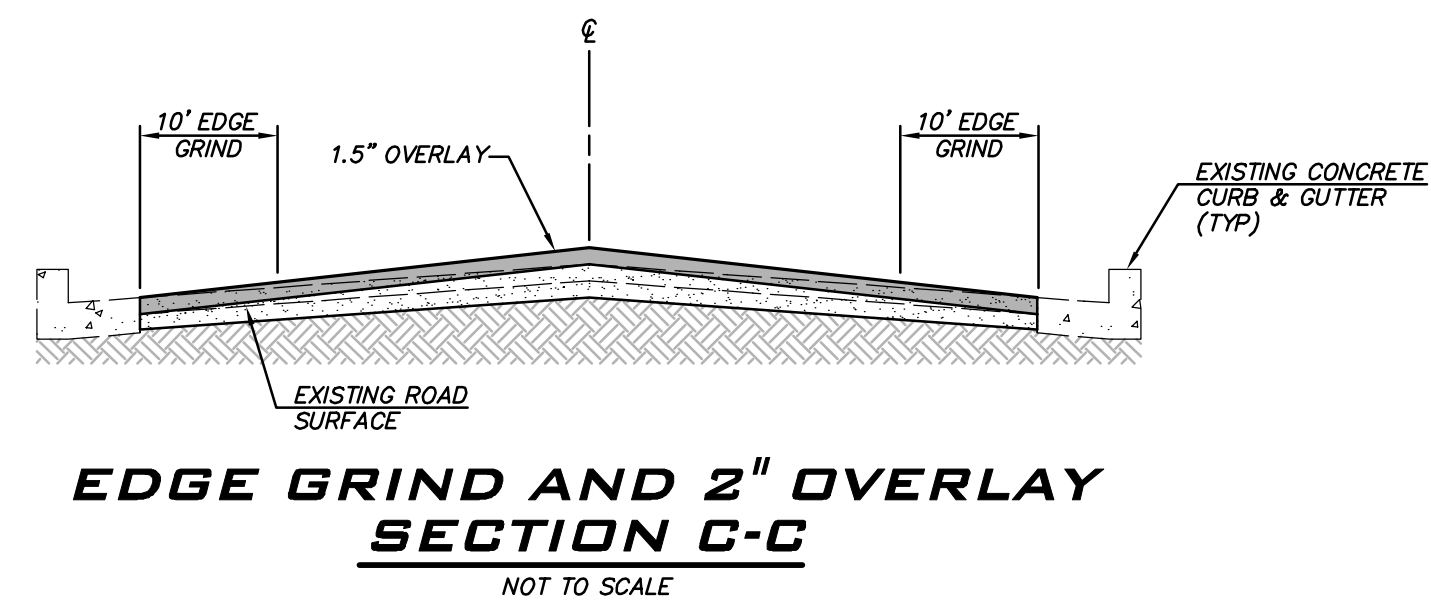
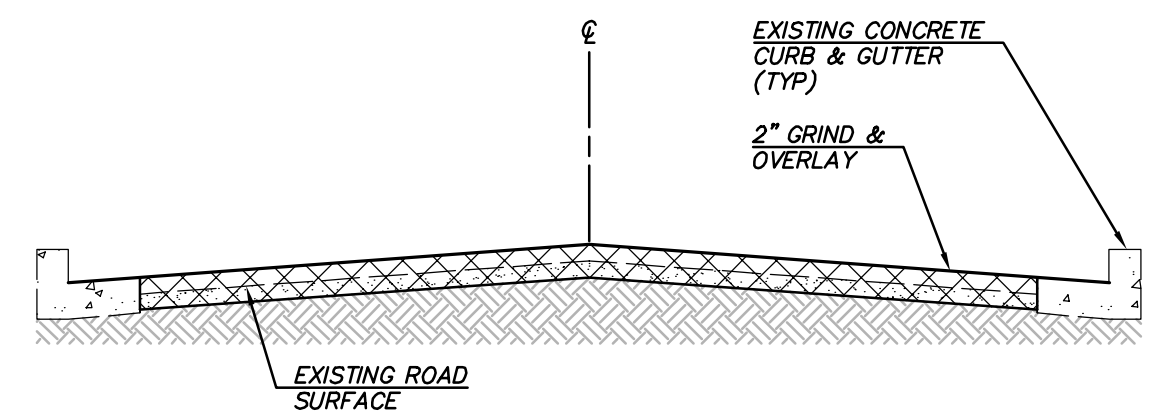
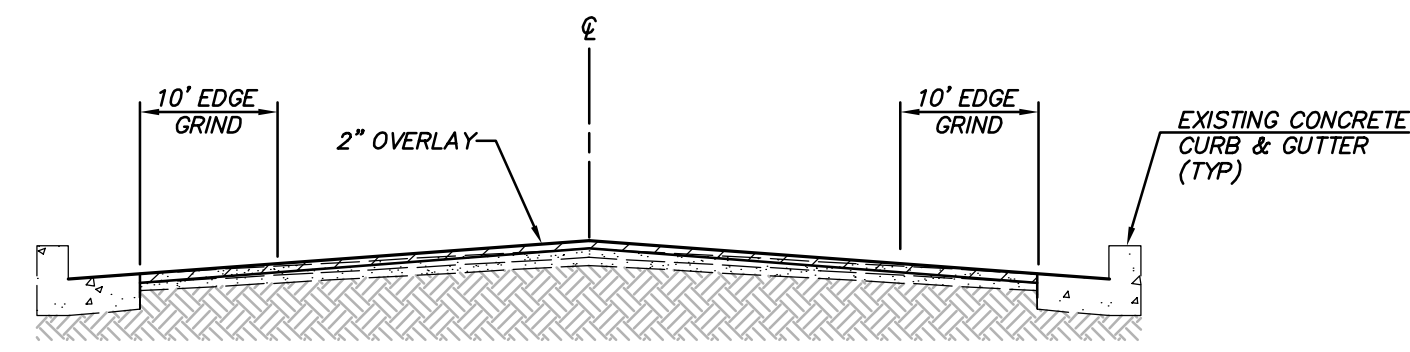
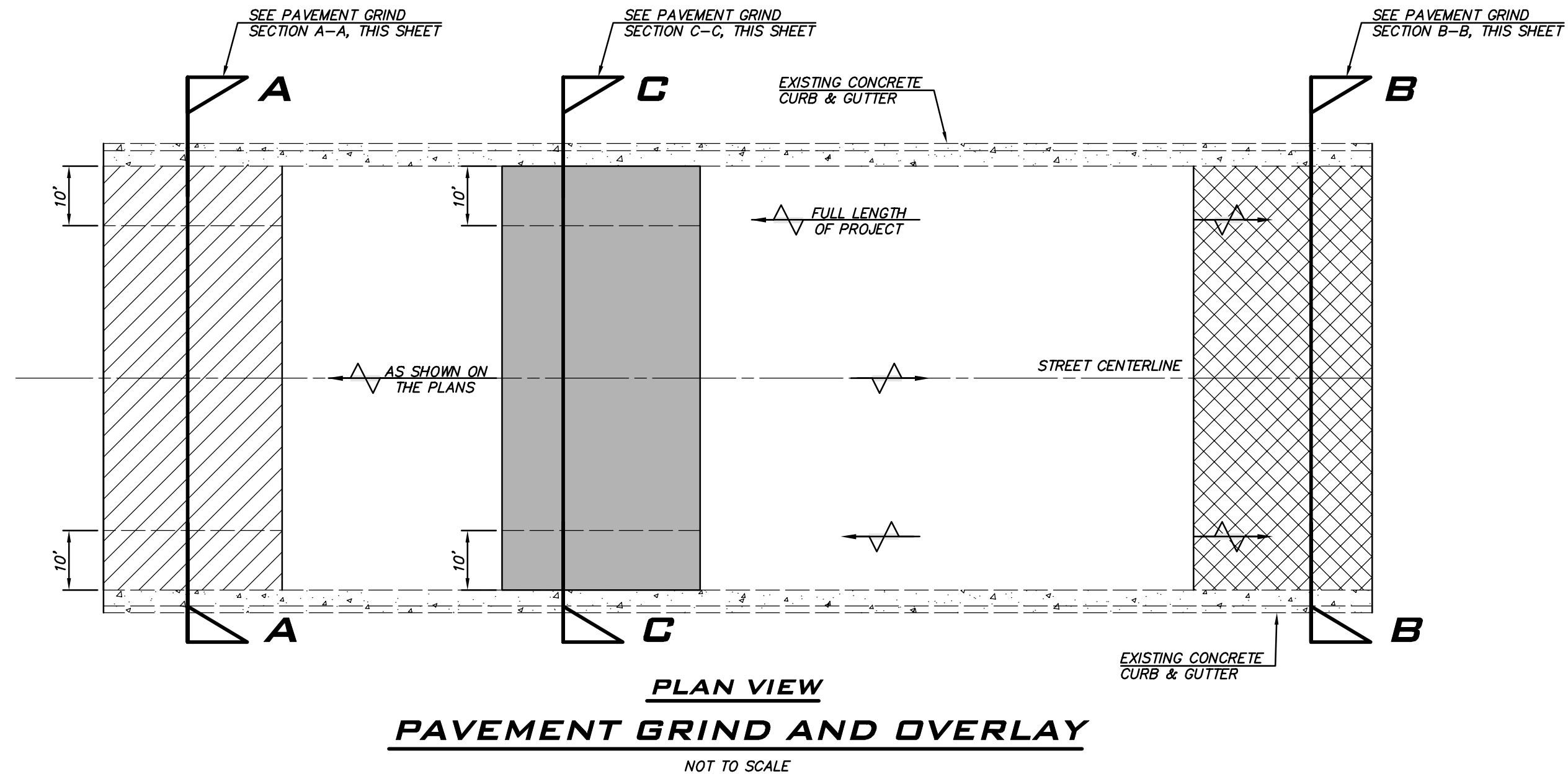
WASHINGTON
CITY OF SAMMAMISH

5/26/23

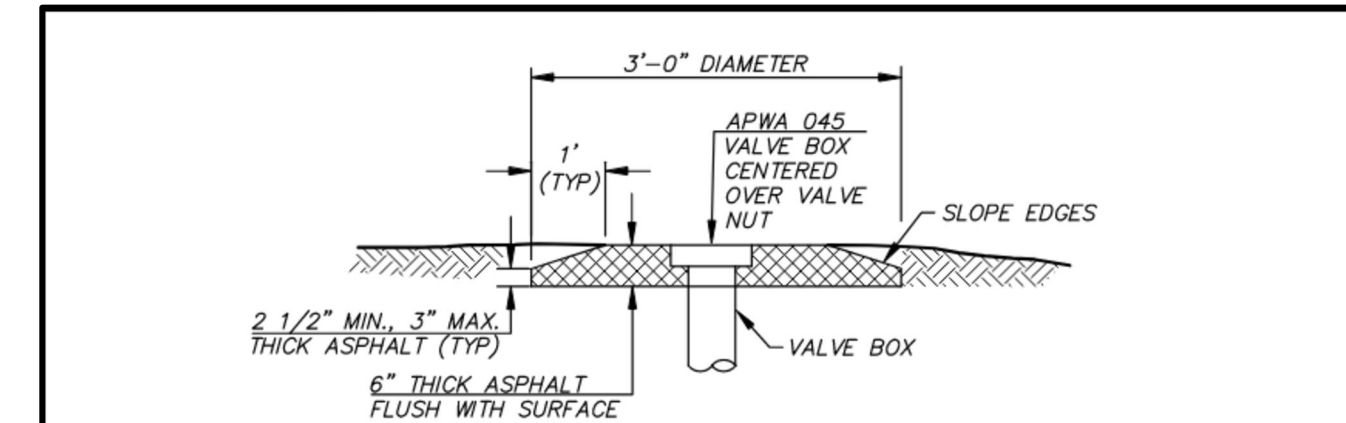
JOB NUMBER:
22-224

SHEET NAME:
OP-08

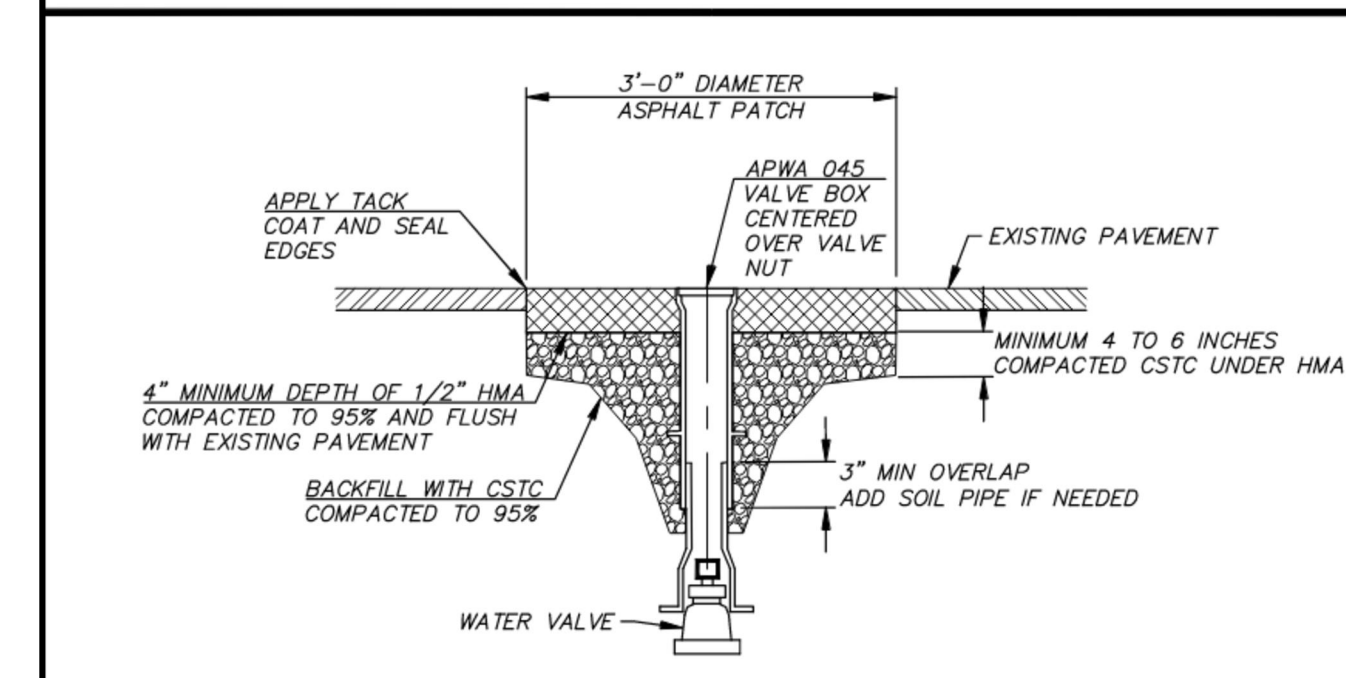
SHT **10** OF **13**



- NOTES**
- CONTRACTOR SHALL WARRANTY MANHOLE ADJUSTMENT AREA FREE FROM LEAKS FOR ONE YEAR.
 - IN PAVED AREAS, MANHOLE FRAMES SHALL BE RAISED TO GRADE AFTER PLACEMENT OF THE ASPHALT'S FINAL LIFT AND WITHIN 48 HOURS UNLESS OTHERWISE APPROVED BY THE DISTRICT.
 - IN PAVED AREAS, NEATLY REMOVE ASPHALT AROUND EXISTING MANHOLE FRAME.
 - INSTALL CHANNEL BOARD IN MANHOLE PRIOR TO ANY WORK, AND REMOVE AFTER FINAL ADJUSTMENT.
 - PRIOR TO ADJUSTMENT, NOTIFY DISTRICT IF THE FINAL MANHOLE NECK WILL EXCEED 28".
 - IN PAVED AREAS, EXCAVATE AROUND EXISTING MANHOLE FRAME TO A MIN. DEPTH OF 12".
 - REMOVE FRAME AND COVER, AND INSTALL ADJUSTMENT RINGS, TILTING FRAME AS NECESSARY TO MATCH EXISTING GRADE. ADJUSTMENT BRICKS RECESSED FOR GROUTING, CAN BE UTILIZED. REINSTALL FRAME AND COVER.
 - IN PAVED AREAS BACKFILL WITH CRUSHED SURFACING TOP COURSE (CSTC) COMPACTED TO 95% (MODIFIED PROCTOR).
 - IN NON-PAVED AREAS, BACKFILL WITH APPROVED BACKFILL MATERIAL COMPACTED TO 95%.
 - IN PAVED AREAS, INSTALL 1/2" HMA IN 2-INCH LIFTS, TO A COMPACTED DEPTH EQUAL TO THE EXISTING PAVEMENT OR A MINIMUM OF 4", WHICHEVER IS GREATER. TACK ALL EDGES AND SEAL FINISH JOINTS WITH TAR AND SAND.
 - IN UN-PAVED AREAS, INSTALL ASPHALT PATCH TO A MINIMUM COMPACTED DEPTH OF 6" AS SHOWN ABOVE.
 - GROUT MANHOLE NECK. "JETSET" NOT ALLOWED. DO NOT RUN GROUT ONTO MANHOLE FRAME.
- REV. 10/19/17
- GENERAL NOTES FOR ASPHALT COLLAR/PATCHES AROUND MANHOLES**



- NOTES**
- THE COMPLETED PATCH SHALL BE FLUSH WITH THE SURROUNDING FINAL GRADE, SHALL NOT BE MORE THAN 1/8" FLUSH WITH THE SURROUND PAVEMENT, AND SHALL BE SMOOTH FOR TRAFFIC.
 - WHEN RAISING THE VALVE BOX TO FINISHED GRADE, EXCAVATE CASTING TO A DEPTH NECESSARY TO VERIFY CASTING OVERLAPS SOIL PIPE BY 3". ADD SOIL PIPE AS NEEDED. VALVE BOX SHALL BE CENTERED OVER THE VALVE NUT.
 - SLIP CANS ARE NOT ALLOWED WHEN RAISING VALVE BOXES TO GRADE.
- REV. 10/20/17
- VALVE BOX ASPHALT COLLAR DETAIL FOR NON-PAVED AREAS**

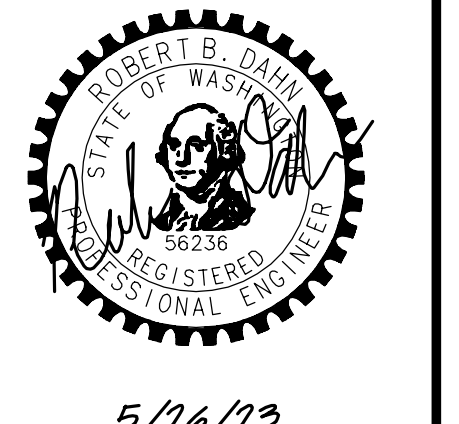


- NOTES**
- VALVE CANS SHALL BE RAISED TO GRADE AFTER PLACEMENT OF THE ASPHALT'S FINAL LIFT AND WITHIN 48 HOURS UNLESS OTHERWISE APPROVED BY THE DISTRICT.
 - NEATLY REMOVE ASPHALT AROUND EXISTING VALVE CASTING.
 - EXCAVATE VALVE CASTING TO A DEPTH NECESSARY TO RAISE CASTING AND VERIFY CASTING OVERLAPS SOIL PIPE BY 3". ADD SOIL PIPE AS NEEDED. VALVE BOX SHALL BE CENTERED OVER THE VALVE NUT.
 - SLIP CANS ARE NOT ALLOWED.
 - BACKFILL WITH CSTC COMPACTED TO 95% (MODIFIED PROCTOR).
 - INSTALL 1/2" HMA IN 2-INCH LIFTS, TO A COMPACTED DEPTH EQUAL TO THE EXISTING PAVEMENT OR A MINIMUM OF 4", WHICHEVER IS GREATER. TACK ALL EDGES AND SEAL FINISH JOINTS WITH TAR AND SAND.
 - THE COMPLETED PATCH SHALL BE FLUSH WITH THE SURROUNDING PAVEMENT, SHALL NOT VARY FROM BEING FLUSH BY MORE THAN 1/8", AND SHALL BE SMOOTH FOR TRAFFIC.
- REV. 10/20/17
- VALVE BOX PAVEMENT PATCH DETAIL AND PAVED AREAS**

SCALE:
 AS NOTED
 PROJECT MANAGER:
 ROB DAHN, PE
 PROJECT ENGINEER:
 GRACE GARWIN, EIT
 DESIGNER:
 CAROL DOGGETT
 ISSUE DATE:
 5/24/2023

NO	DATE	BY	REVISIONS

DETAILS
2023 OVERLAY PROJECT
 WASHINGTON
 CITY OF SAMMAMISH



5/26/23
 JOB NUMBER:
22-224
 SHEET NAME:
DT-01

