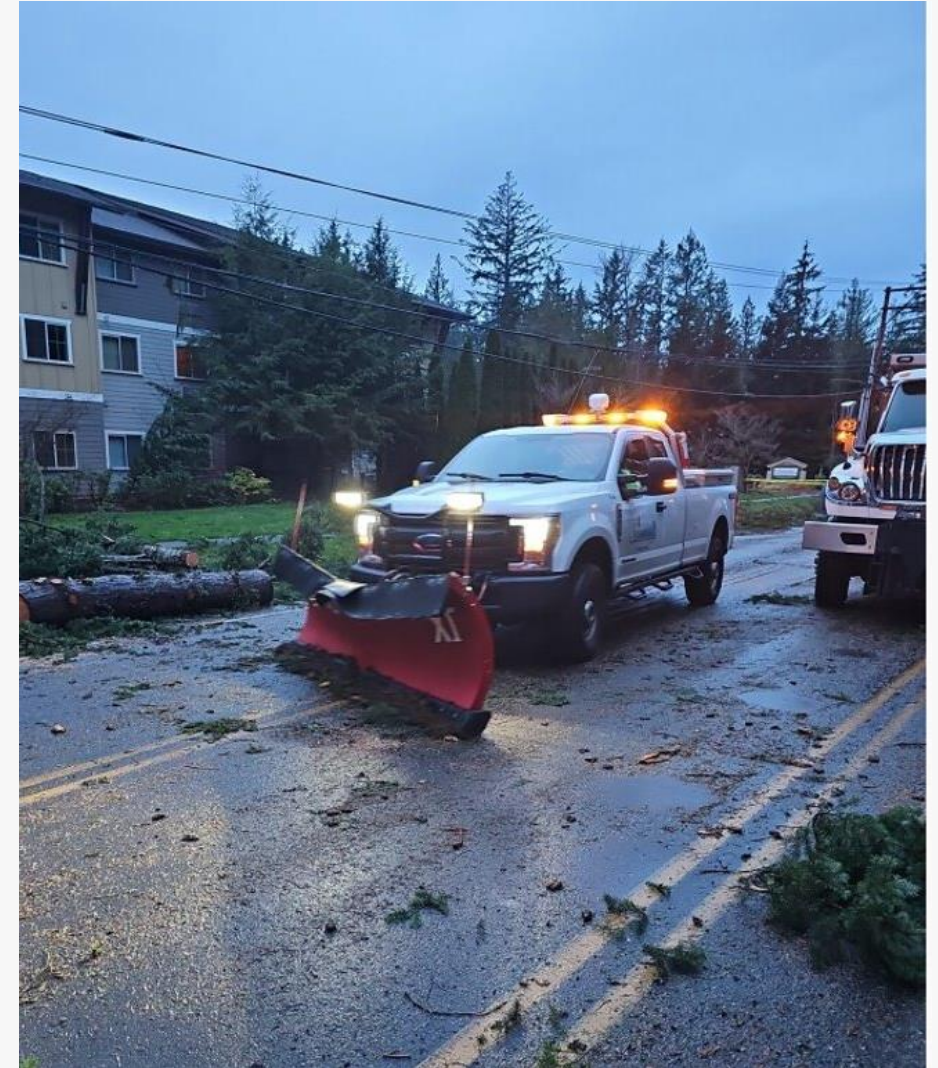


Storm Update

City Council Special Meeting | November 25, 2024

Preparing for the Storm

- Crews prepared for the storm by readying:
 - Heavy equipment
 - Portable generators
 - Chainsaws and related equipment
 - Message boards, barricades, and sandbags
 - Fuel for all equipment
- Crews moved to emergency standby



The Storm

- Started the afternoon of Tuesday, Nov. 19
- First down tree reported at 2 p.m.
- Forecasted winds 30 mph sustained and 55 mph gusts
- Many roads blocked by downed trees and power lines
- Nearly entire city lost power and internet
- Cell networks disrupted
- Eastside Fire & Rescue reported over 750 emergency calls across their service area between 5–9 p.m.

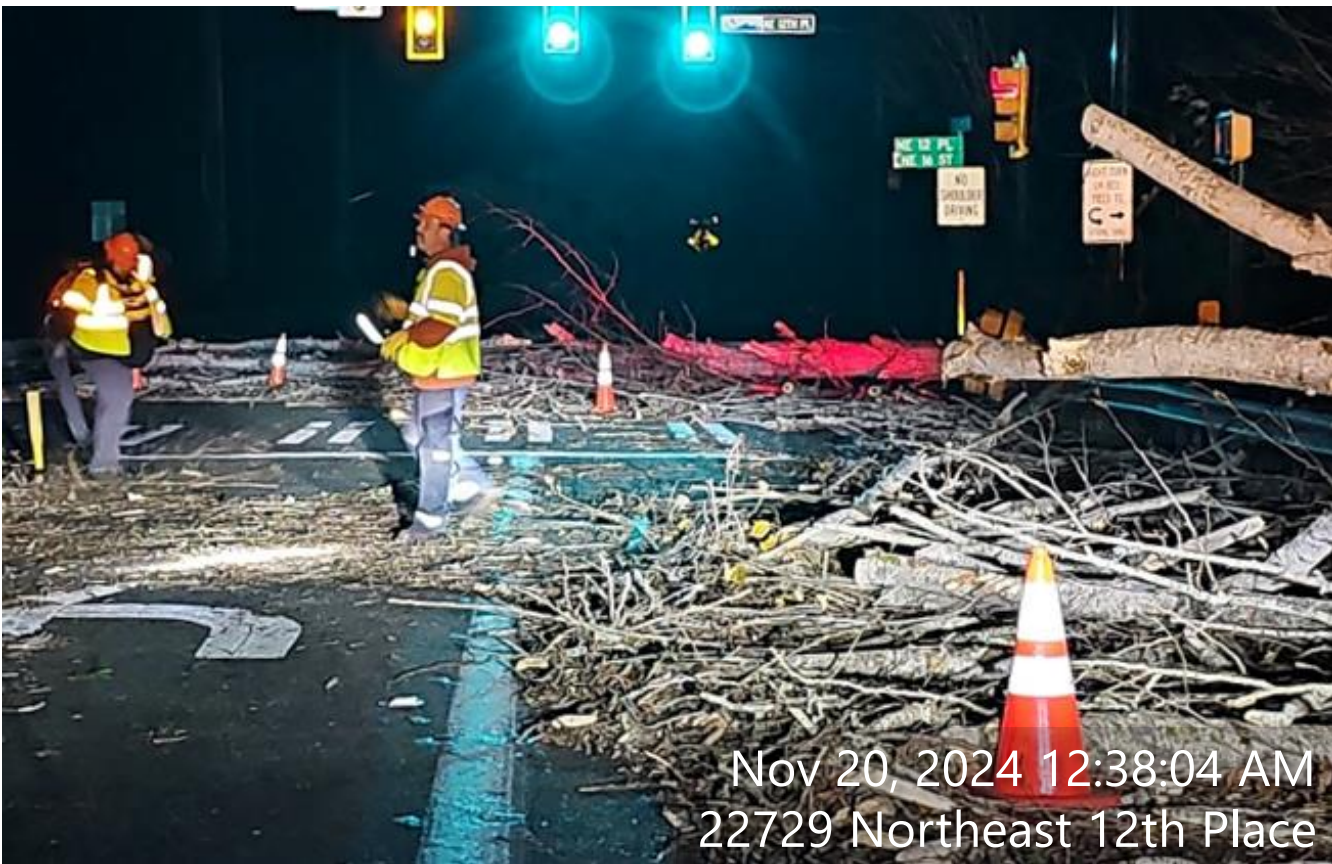




Response

- City crews are working every day to remove downed trees and debris, starting with priority routes
- Collaboration with EF&R and Sammamish PD to ensure life safety access
- City's response restricted until PSE addresses downed power lines
- Debris management will continue to be a long-term response





Warming Center

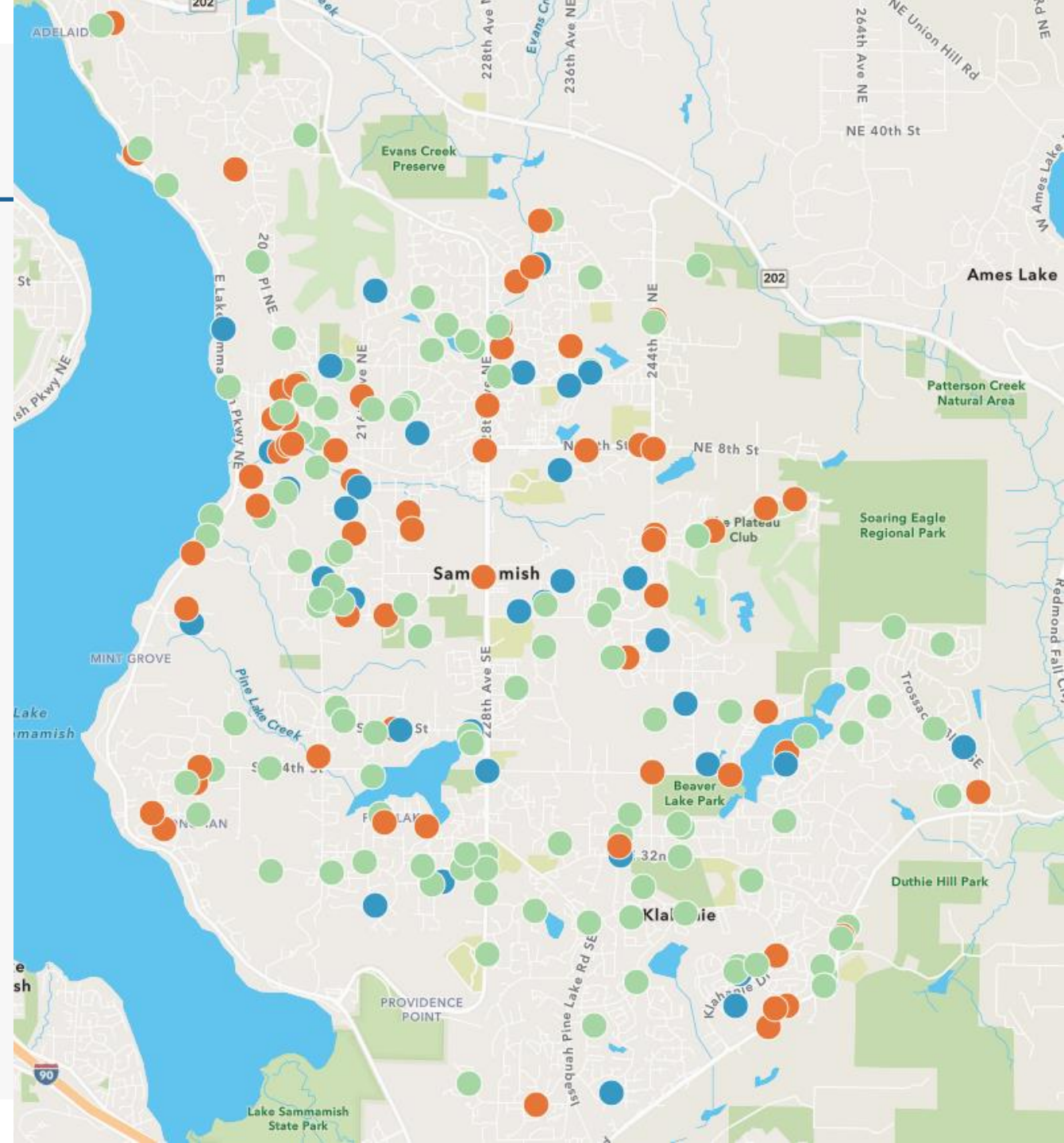
City Hall warming center opened Nov. 20 through today from 8am – 8pm

- Estimated 400+ people per day initially
- Utilized every available chair, table, and floor space
- City provided water, coffee, cocoa, and tea as well as games and puzzles
- Food trucks
- Attendees charged devices, battery packs, medical equipment, and more
- Many kind words from attendees!



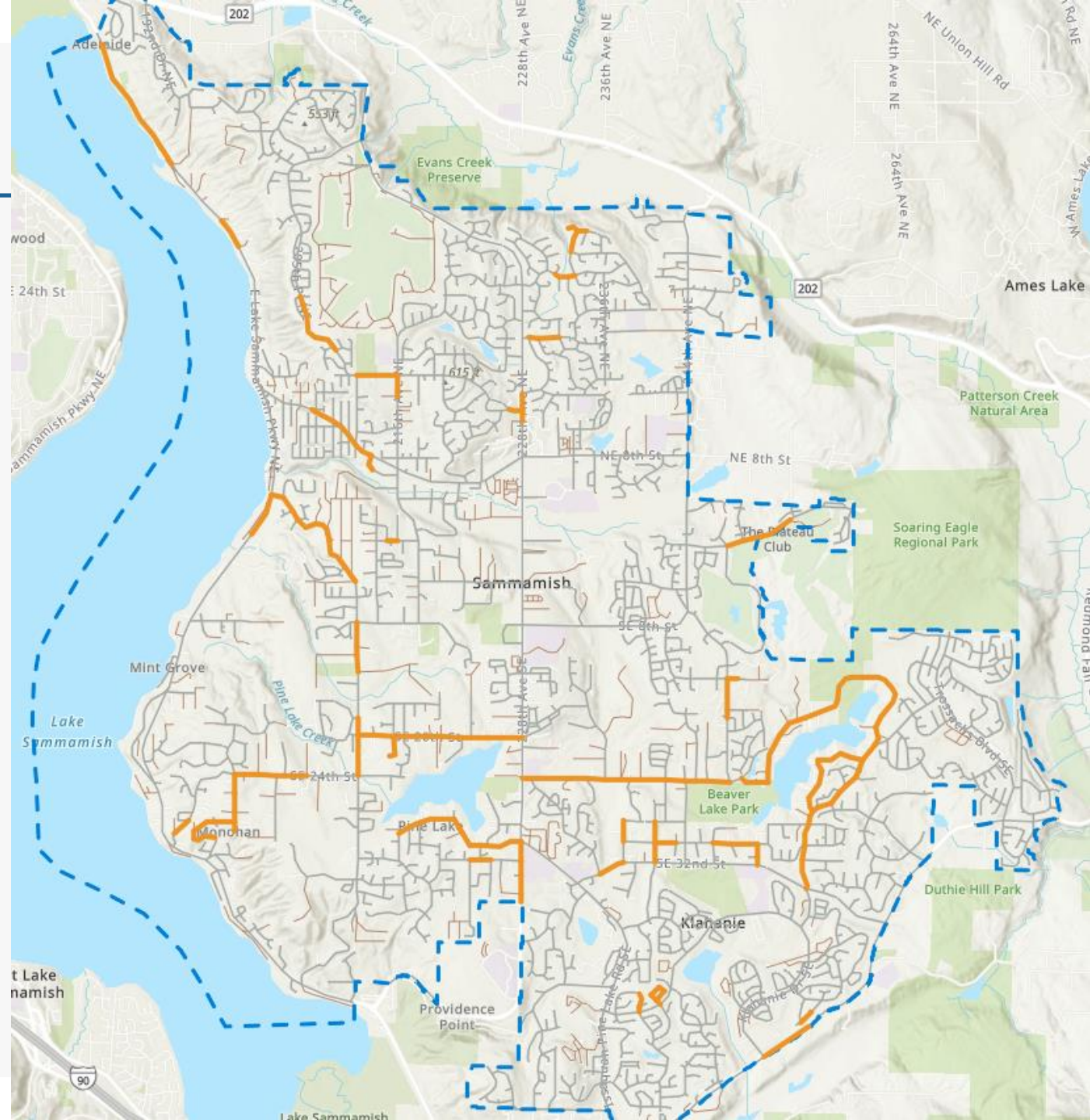
Service Requests

- 227 service requests created on SeeClickFix from 11/19 – today
- Most requests for downed trees (120+) and downed trees & power lines (40+)



Current Status - Streets

- Closed/compromised streets



Current Status - Parks

- Significant damage to multiple parks – trails, bridges, docks, etc.
- Secondary priority to ensuring streets are open and safe
- Parking lots may be closed for debris management

Open Parks 11/25

The following parks have been inspected and are open
The remainder are closed until further notice

- | | |
|--|------------------------------|
| • Eastlake High School & Inglewood Middle School community fields | • NE Sammamish Park |
| • Klahanie Park | • Illahee |
| | • Upper Commons Plaza |
| | • Lower Commons |



Beaver Lake Preserve: 51 trees down, 4 uprooted trails, 2 bridges damaged



Ebright Creek Park



Sammamish Landing



Beaver Lake Pavillion



Pine Lake Park



Pine Lake Park



Beaver Lake Preserve

Emergency Proclamation

City Manager issued emergency proclamation Nov. 22

- Allows City to use emergency powers to aid in the response to the storm:
 - Additional supplies, equipment and services to support road clearing
 - Allows City to quickly contract with service providers to access needed assistance in storm recovery
- City is asking the state and federal government to declare an emergency to allow cost reimbursement



CITY OF SAMMAMISH PROCLAMATION OF CIVIL EMERGENCY

WHEREAS, on November 19, 2024, the City of Sammamish and surrounding areas experienced a severe winter storm with heavy winds and rain, described by meteorologists as a "bomb cyclone"; and

WHEREAS, the weather event has caused widespread and extended power outages, communications disruptions including internet and cellular outages, public and private sector damage, and other infrastructure failures; and


WHEREAS, these conditions present a threat to public health, welfare, and safety and to the proper performance of essential governmental and private functions; and

WHEREAS, the City of Sammamish believes that the current conditions and the potential for additional weather events constitute a civil emergency as defined by Sammamish Municipal Code [2.70.020\(2\)](#) and necessitate the utilization of emergency powers granted under RCW 38.52.070; and

WHEREAS, in the judgment of the undersigned, extraordinary measures are required to protect the public health, safety and welfare of Sammamish residents and may go beyond the capability of local resources.

NOW, THEREFORE, the undersigned City Manager of the City of Sammamish, Washington does declare a civil emergency exists within the City of Sammamish.

Dated this 22nd day of November 2024.



Scott MacColl
City Manager of the City of Sammamish

Resident Guidance

What Residents Should Do:

- Stay informed via City updates
- Call 9-1-1 for emergencies
- Use SeeClickFix to report non-emergency hazards
- Avoid placing debris in the right of way
- Utilize expedited permitting for storm damaged buildings and trees (Sammamish.us/StormTreeRemoval)
 - City permits are required to remove trees that are not already on the ground
 - Homeowners can mitigate damage to structures (e.g., add tarp to roof) before applying for a permit

Home

Your Government

Administrative Services

Advisory Committees, Commissions, and Boards

Community Development

Permit Center

STORM DAMAGE TREE REMOVAL

Getting Started and FAQs

Project Guidance Request Form

Tree Management

Codes and Regulations

Applications and Forms

Permit, Application, and Development Fees

Financial Guarantees

Business Permitting, Development, and Licensing

Current Planning

Building

Code Compliance

Long Range Planning

Urban Forest Management Program

Housing Legislation

Contact Us

City Council

City Hall

City Manager's Office

City Clerk

STORM DAMAGE TREE REMOVAL

Share this page:
[Facebook](#) [LinkedIn](#) [Twitter](#) [Email](#)

A tree may be removed that has become an imminent threat due to recent storm damage or has already fallen, during the bomb cyclone storm event. If feasible, it is highly recommended that an arborist provides a letter explaining the threat posed by the tree(s).

The City has issued an emergency proclamation in response to the bomb cyclone storm event, providing flexibility to address threats and clean up. Photo documentation is required.

STORM DAMAGE TREE REMOVAL

For the immediate removal of trees that are compromised and considered an imminent threat, or those that have already fallen and need to be cleared from the property, please provide the following information:

Name: *

Enter Full Name

Email: *

example@example.com

Address: *

Parcel Number: *

Number of trees to be removed: *

Please Select

Size of trees (estimate): *

Next Steps

- Continuing to work with PSE and others on storm related impacts
- Crews will continue clearing the right of way this week and over the weekend
- Residents can utilize an additional 96 gallons of yard waste for free this week and next
 - Working on additional debris option for residents (e.g., drop boxes)
- Detailed update at Dec. 10 Council meeting



Nov 23, 2024 2:35:49 PM
20131 Southeast 23rd Place