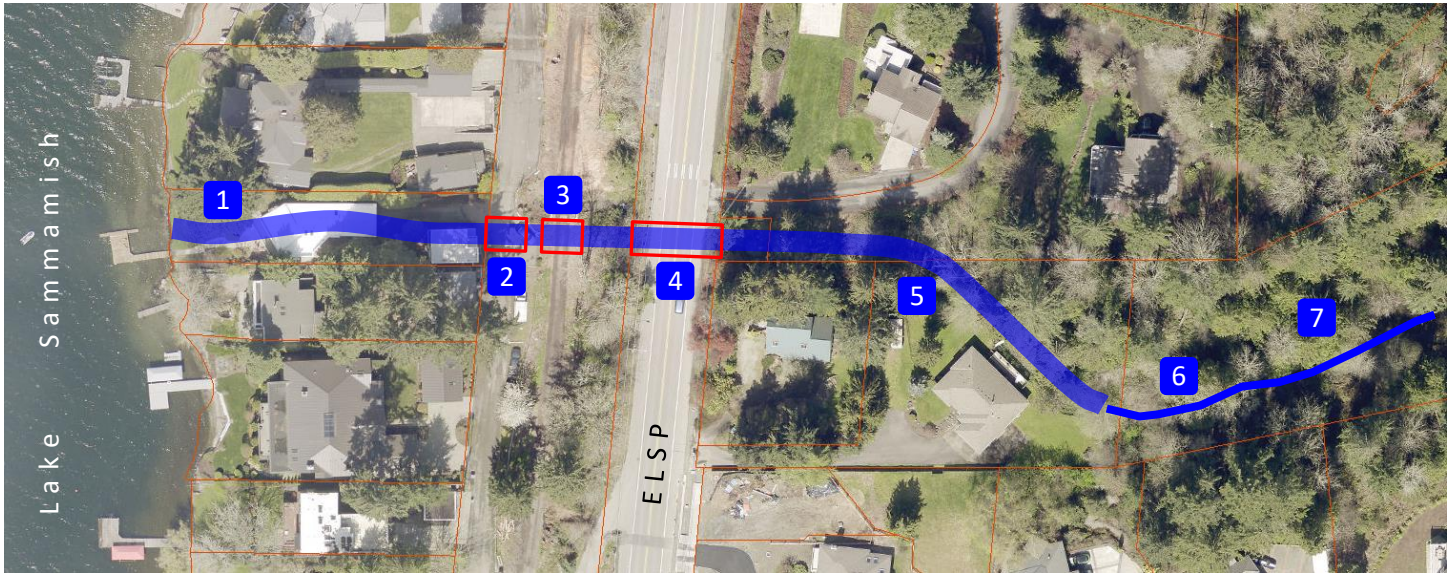


Proposed Stream Improvements



Project Elements

1. Stream relocated onto City-owned property (City project element).
2. Stream through new culvert at East Lake Sammamish Shore Lane NE (King County project element).
3. Stream through new culvert at East Lake Sammamish Regional Trail (King County project element).
4. Stream through new bridge at East Lake Sammamish Parkway NE (City project element).
5. Stream reconstructed through property along existing stream alignment (City project element).
6. Retain existing stream channel.
7. Remove diversion dam (City project element). Provides access to 2,600 feet of upstream spawning habitat.